



INTAKE SYSTEMS FOR VEHICLES LISTED ARE 50 STATE LEGAL. SEE KNFILTERS.COM FOR CARB STATUS ON EACH PART FOR A SPECIFIC VEHICLE.

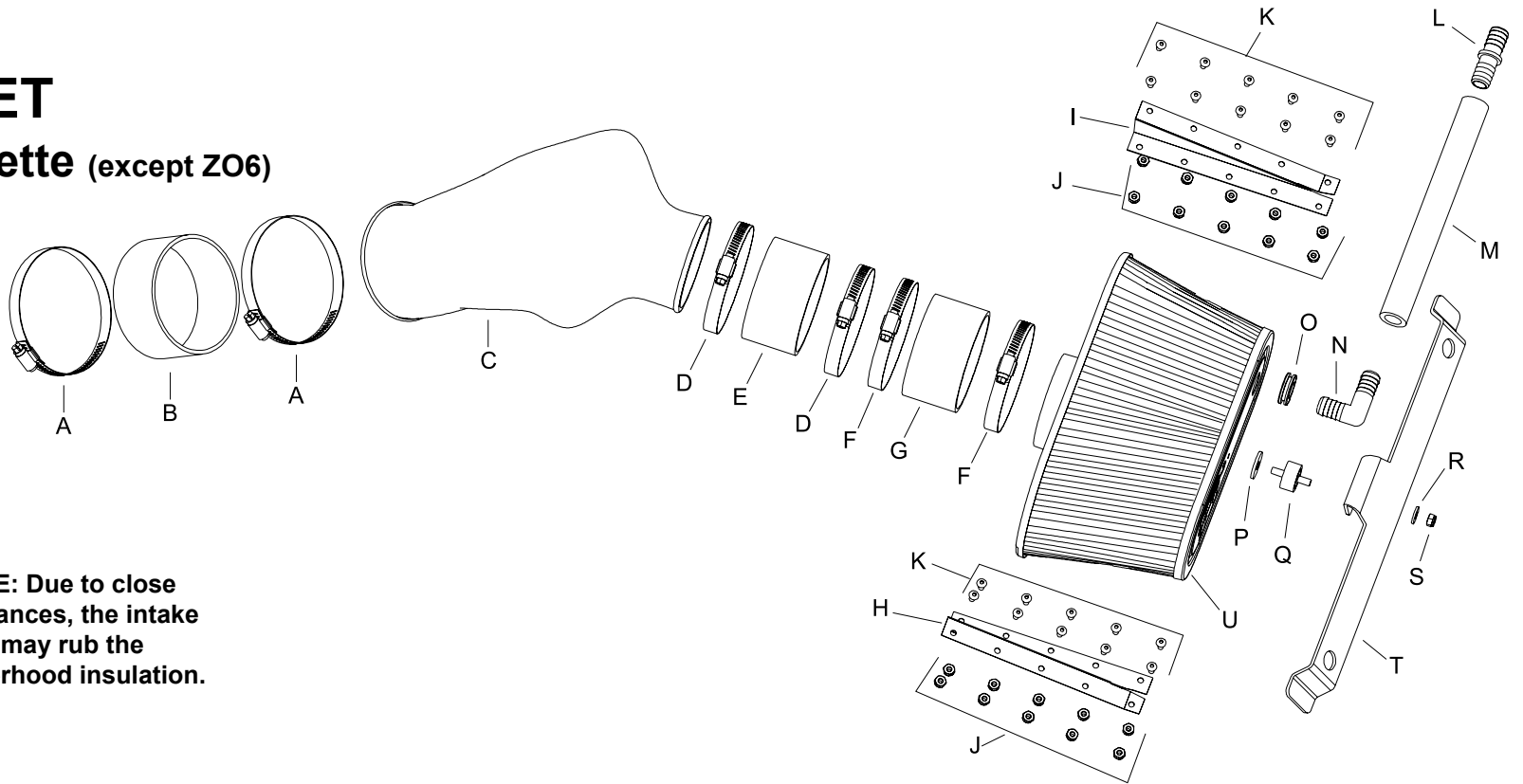
INSTALLATION INSTRUCTIONS

57-3035
CHEVROLET
2001-04 Corvette (except ZO6)
V8-5.7L

TOOLS NEEDED:

- Flat Blade Screwdriver
- 3/8" Wrench
- 7mm Wrench
- 10mm Wrench
- 1/8" Allen Wrench
- Ratchet
- Socket Extension
- 10mm Socket
- File
- Jig Saw
- Utility Knife
- Drill
- 3/16" Drill Bit
- 5/16" Drill Bit
- 3/4" Drill Bit

NOTE: Due to close tolerances, the intake tube may rub the underhood insulation.



PARTS LIST:

| Description | Qty. | Part # | Description | Qty. | Part # | Description | Qty. | Part # |
|----------------------------|------|--------|----------------------------------|------|--------|---------------------------------|------|---------|
| A Hose Clamp, #64 midi | 2 | 08650 | H Bracket "Z" left | 1 | 070842 | O Grommet 1-1/8"odx5/8"idx5/16" | 1 | 08053 |
| B Silicone hose 4.0 x 1.75 | 1 | 08755 | I Bracket "Z" right | 1 | 070832 | P Washer, rubber, 1"x.300 | 1 | 21685 |
| C Intake tube (CA) | 1 | 087050 | J Nut; 10-32 ss nylock jam | 20 | 08253 | Q Rubber stud | 1 | 07027 |
| D Hose Clamp #56 | 2 | 08620 | K Bolt; 10-32 x 3/8" ss btn head | 20 | 08387 | R Washer 1"od x 1/4"id | 1 | 08160 |
| E Silicone hose 3.5 x 2.0 | 1 | 08630 | L Hose mender; 1/2" to 5/8" | 1 | 08726 | S Nylock nut 6mm | 1 | 07553 |
| F Hose clamp #60 | 2 | 08624 | M Silicone hose 5/8" id x 9" | 1 | 08691 | T Bracket | 1 | 07137 |
| G Silicone hose | 1 | 08621 | N vent; 5/8", 90 deg. | 1 | 08072 | U Air filter | 1 | RP-5070 |

NOTE: FAILURE TO FOLLOW INSTALLATION INSTRUCTIONS AND NOT USING THE PROVIDED HARDWARE MAY DAMAGE THE INTAKE TUBE, THROTTLE BODY AND ENGINE.

TO START:

1. Turn off the ignition and disconnect the negative battery cable.
NOTE: Disconnecting the negative battery cable erases pre-programmed electronic memories. Write down all memory settings before disconnecting the negative battery cable. Some radios will require an anti-theft code to be entered after the battery is reconnected. The anti-theft code is typically supplied with your owner's manual. In the event your vehicles anti-theft code cannot be recovered, contact an authorized dealership to obtain your vehicles anti-theft code.



2. Disconnect the mass air sensor electrical connection.



3. Disconnect the air injection vent hose.



4. Release the push clips that retain the stock intake tube to the upper radiator cover.



5. Loosen the hose clamp on the intake hose at the throttle body.



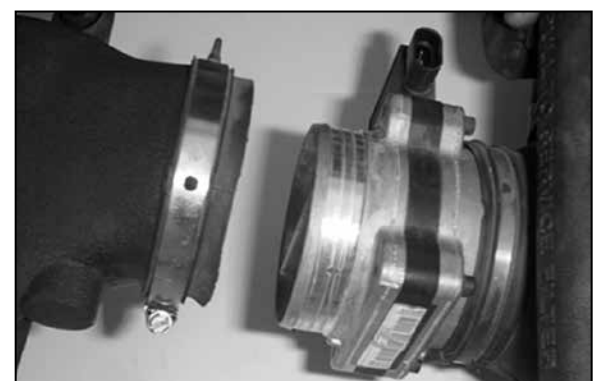
6. Pull the airbox towards the engine to release it from its mounting grommets.



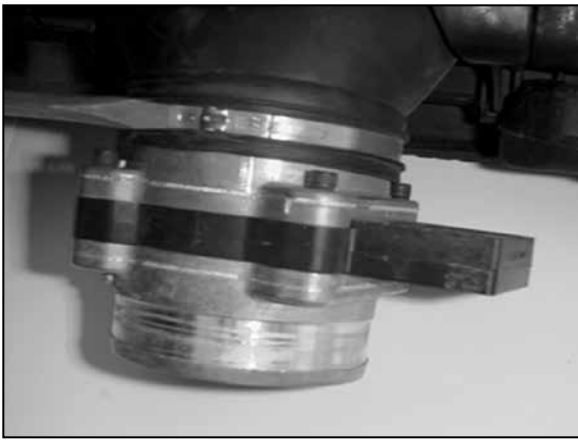
7. Detach the intake hose from the throttle body and remove the entire air intake assembly.
NOTE: K&N Engineering, Inc., recommends that customers do not discard factory air intake.



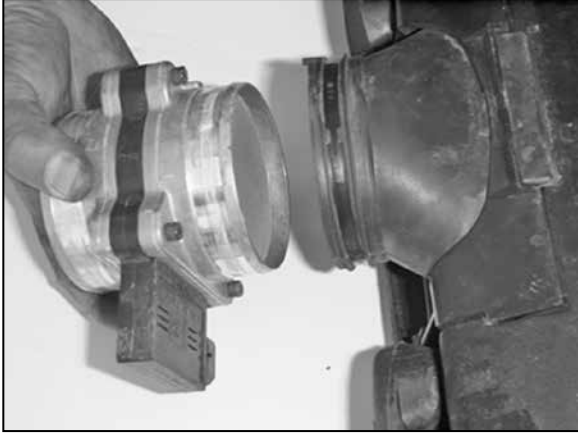
8. Detach the wiring harness retaining clip from the lower radiator cover.



9. Loosen the hose clamp and detach the stock intake tube from the mass air sensor.



10. Remove the mass air sensor hose clamp.



11. Remove the mass air sensor from the airbox.



12. Remove the two grommets from the airbox mounting points.



13. Attach the 3.5" ID silicone hose (08621) onto the flange of the Air filter element.



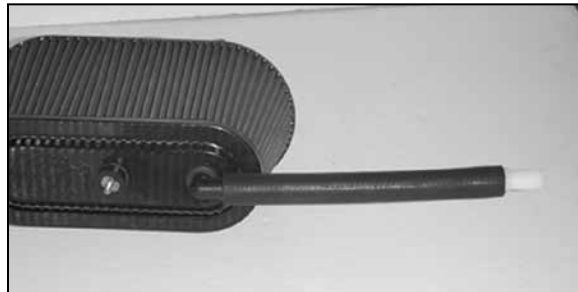
14. Install the mass air sensor into the silicone hose with the arrow on the mass air sensor pointing away from the Air filter element.



15. Install the 5/8" ID grommet and the rubber mounted stud into the top plate of the Air filter element.



16. Assemble the 90° degree vent, hose mender and vent hose provided as shown.



17. Insert the 90° degree vent into the grommet in the top plate of the filter.



18. Install the 4" ID silicone hose (08755) onto the K&N® intake tube.

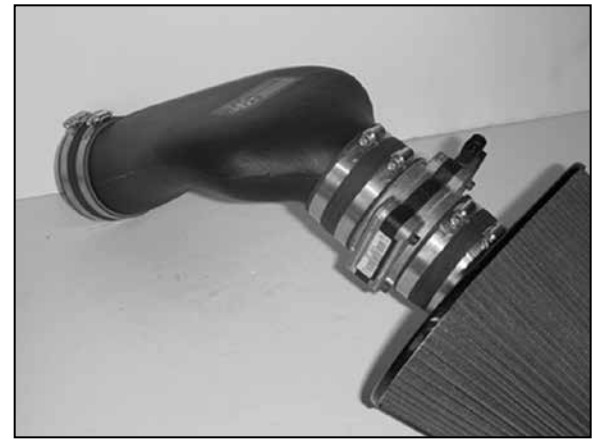


19. Install a 3.5" ID silicone hose (08630) onto the K&N® intake tube.

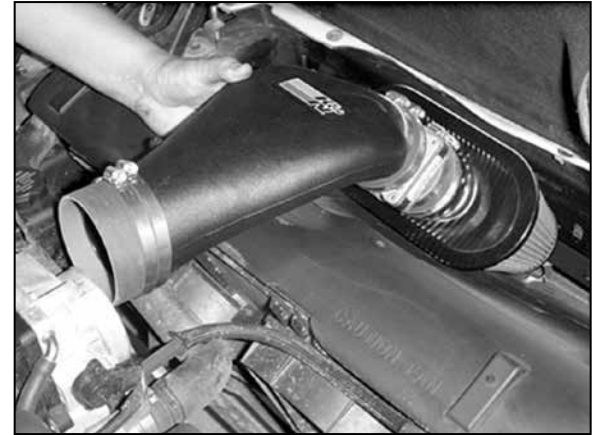


20. Attach the angled bracket to the rubber mounted stud using the provided hardware.
NOTE: Do not tighten completely at this time.

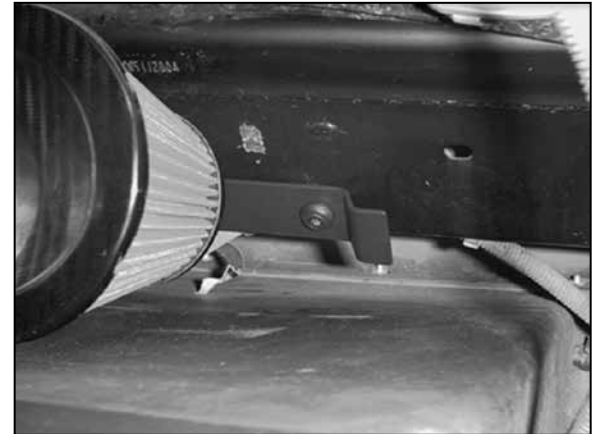
21. Install the grommets removed in step 12 into the holes in the angled bracket.



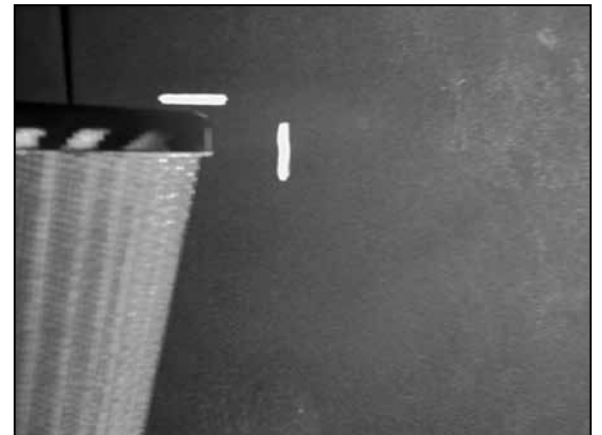
22. Assemble the intake tube and air filter element assemblies.



23. Install the K&N® intake assembly.



25. Using the top of the air filter element as a guide, mark the lower radiator cover a minimum of 1/2" above the filter.



26. Using the Air filter element as a guide, mark a minimum of 1/2" away from the air filter element.

27. Release the angled bracket from its mounting points and remove the K&N® intake assembly.



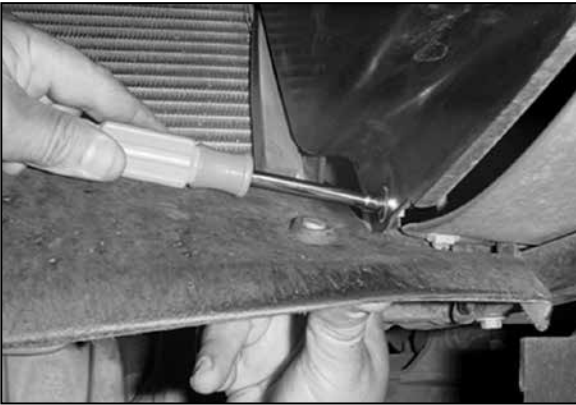
28. Loosen and remove the four bolts that retain the upper radiator cover.



29. Remove the upper radiator cover.



30. Loosen and remove the five bolts that mount the lower radiator cover to the bumper cover on the underside of the car.



31. Loosen and remove the two bolts that retain the lower radiator cover to its mounting brackets.



32. Detach the courtesy lamp wiring harness from the lower radiator cover and disconnect air temp sensor at the right bottom corner of radiator cover.



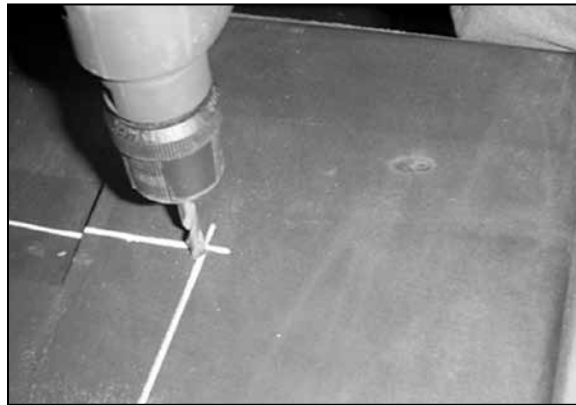
33. Pull firmly to release the radiator cover from its retaining clips.



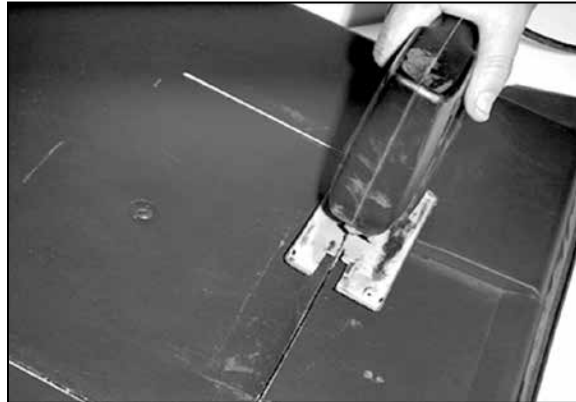
34. Remove the lower radiator cover.



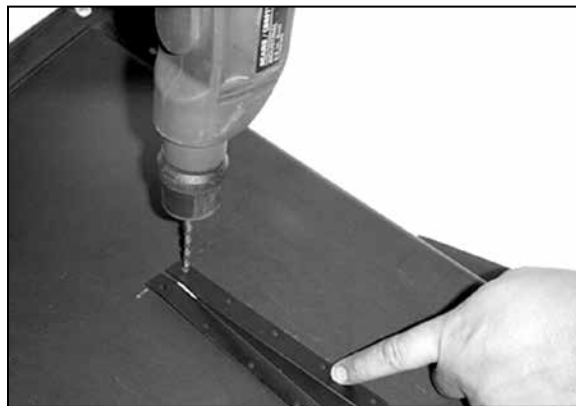
35. Using the indicated horizontal and vertical marks, connect the upper and side trim lines as shown.



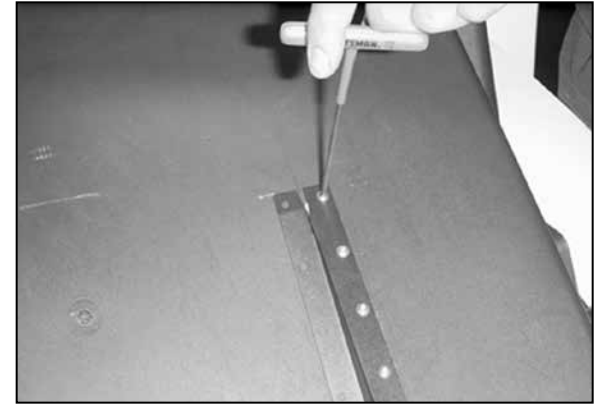
36. Using a 5/16" drill bit, drill a hole where the horizontal and vertical lines intersect.



37. Using a jigsaw, cut along the horizontal and vertical lines.
NOTE: It will be necessary to clean up the cuts with a file.

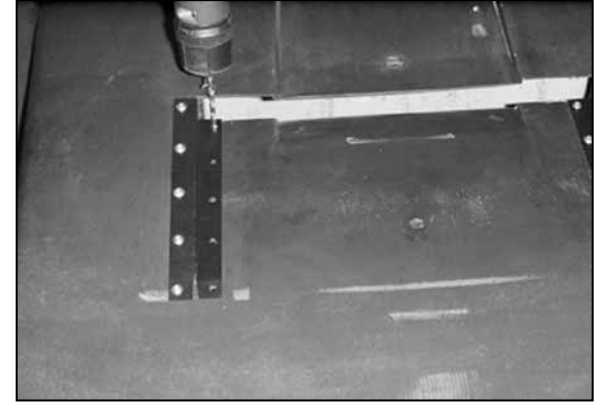


38. Hold the right angled "Z" bracket in place, using a 3/16" drill bit, drill out the five outer holes.

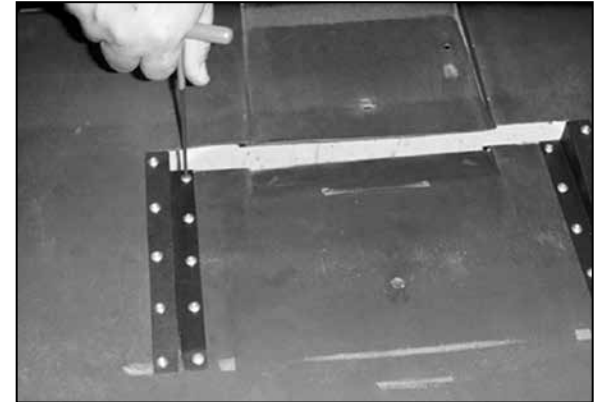


39. Secure the bracket to the lower radiator cover with the hardware provided.

40. Repeat the two previous steps with the left angled "Z" bracket.



41. Drill out the five inner holes of each bracket.



42. Secure the flap to the brackets with the hardware provided.



43. Reinstall the lower radiator cover.

44. Reattach the courtesy lamp wiring harness and the air temp sensor to the lower radiator cover.

45. Secure the lower radiator cover to the bumper cover and mounting brackets using the bolts removed in steps 39 and 40.

46. Reinstall the upper radiator cover and secure with the original retaining bolts.



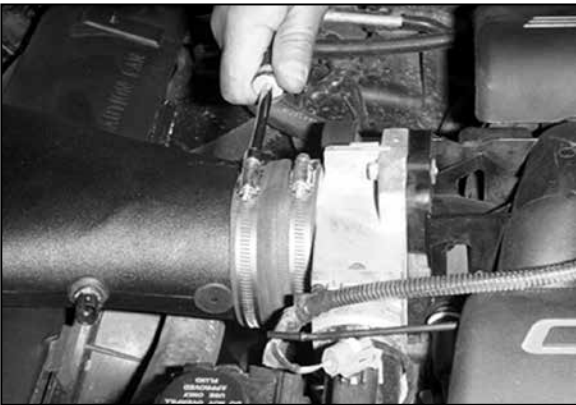
47. Reinstall the K&N® intake assembly.



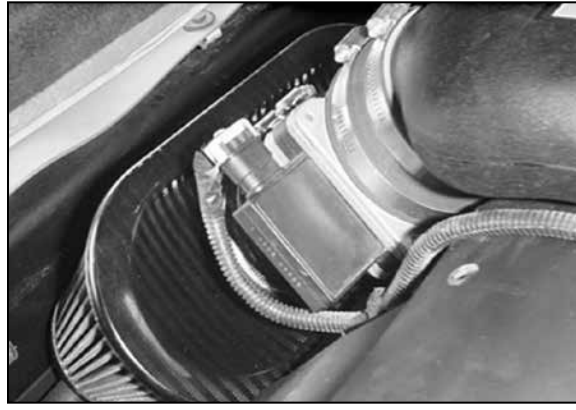
48. Install the angled bracket onto the original airbox mounting points.



49. Attach the air injection hose to the hose mender.



50. Attach the silicone hose to the throttle body and tighten the hose clamps.



51. Reconnect the mass air sensor electrical connection.

52. Reattach the wiring harness retaining clip to the lower radiator cover.



53. Reconnect the vehicle's negative battery cable. Double check to make sure everything is tight and properly positioned before starting the vehicle.

54. Reconnect the vehicle's negative battery cable. Double check to make sure everything is tight and properly positioned before starting the vehicle.

55. The C.A.R.B. exemption sticker, (attached), must be visible under the hood so that an emissions inspector can see it when the vehicle is required to be tested for emissions. California requires testing every two years, other states may vary.

56. It will be necessary for all K&N® high flow intake systems to be checked periodically for realignment, clearance and tightening of all connections. Failure to follow the above instructions or proper maintenance may void warranty.

ROAD TESTING:

1. Start the engine with the transmission in neutral or park, and the parking brake engaged. Listen for air leaks or odd noises. For air leaks secure hoses and connections. For odd noises, find cause and repair before proceeding. This kit will function identically to the factory system except for being louder and much more responsive.

2. Test drive the vehicle. Listen for odd noises or rattles and fix as necessary.

3. If road test is fine, you can now enjoy the added power and performance from your kit.

4. K&N Engineering, Inc., requires cleaning the intake system's air filter element every 100,000 miles. When used in dusty or off-road environments, our filters will require cleaning more often. We recommend that you visually inspect your filter once every 25,000 miles to determine if the screen is still visible. When the screen is no longer visible some place on the filter element, it is time to clean it. To clean and re-oil, purchase our filter Recharger® service kit, part number 99-5050 or 99-5000 and follow the easy instructions.

INTAKE SYSTEMS FOR VEHICLES LISTED ARE 50 STATE LEGAL. SEE KNFILTERS.COM FOR CARB STATUS ON EACH PART FOR A SPECIFIC VEHICLE.