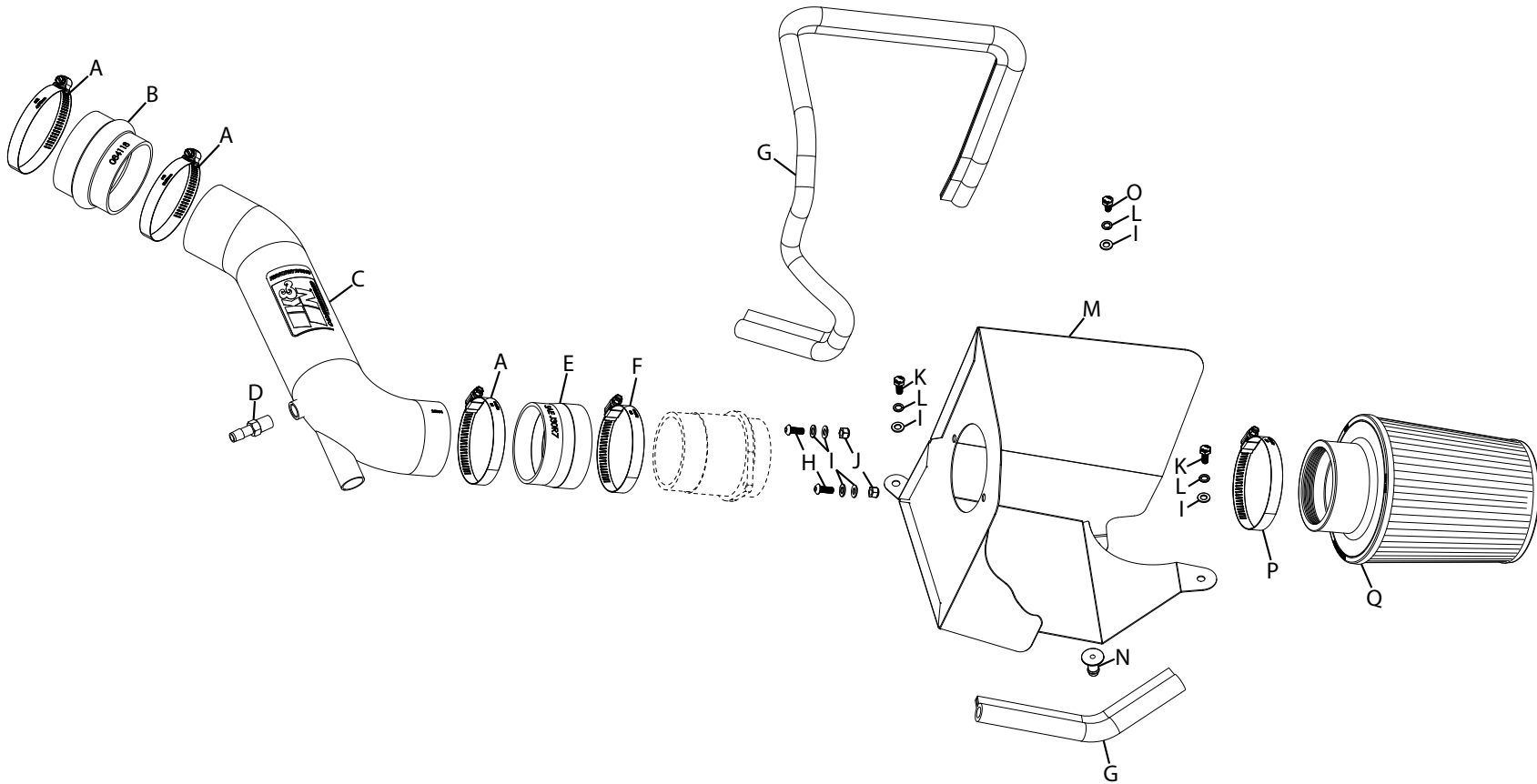


INSTALLATION INSTRUCTIONS

69-5326TC
KIA
2021-22 K5
L4-1.6L Turbo

TOOLS NEEDED:

- Flat blade screw driver
- Ratchet
- Extension
- 10mm socket
- Cutters
- Pliers
- 10mm wrench
- 9/16" wrench
- 4mm allen



PARTS LIST:

Description	Qty.	Part #	Description	Qty.	Part #	Description	Qty.	Part #
A HOSE CLAMP; #52	3	08610	G EDGE TRIM; 48"L	1	102485A	M HEAT SHIELD	1	074533A
B HOSE; HUMP 3"ID TO 3.25"	1	084118	H BOLT; M6 X 1.00 X 16MM	2	07730	N MOUNT; AIR PLASTIC	1	8-186-1
C TUBE; (AL)	1	25854C	I WASHER; 6MM FLAT	7	08269	O BOLT; M6 X 1.00 X 12MM	1	07727
D VENT; 3/8"	1	08047	J NUT; 6MM NYLOCK	2	07512	P HOSE CLAMP; #52	1	08610
E HOSE; 3.125"ID TO 3"ID X 2"L	1	084031	K BOLT; M6-1 X 16MM	2	07812	Q AIR FILTER	1	RU-5100
F HOSE CLAMP; #48	1	08601	L WASHER; M6 SPLIT LOCK ZINC	3	1-3025			

If you need any assistance please call 1-800-858-3333 to speak with a representative in our Customer Service Center before returning the product.

NOTE: FAILURE TO FOLLOW INSTALLATION INSTRUCTIONS AND NOT USING THE PROVIDED HARDWARE MAY DAMAGE THE INTAKE TUBE, THROTTLE BODY AND ENGINE.

TO START:

1. Turn off the ignition and disconnect the negative battery cable.
NOTE: Disconnecting the negative battery cable erases pre-programmed electronic memories. Write down all memory settings before disconnecting the negative battery cable. Some radios will require an anti-theft code to be entered after the battery is reconnected. The anti-theft code is typically supplied with your owner's manual. In the event your vehicles anti-theft code cannot be recovered, contact an authorized dealership to obtain your vehicles anti-theft code.



2. Pull up the fresh air intake duct to dislodge it from the mounting brackets and then remove it from the vehicle.



3. Disconnect the mass air sensor electrical connection.



4. Release the spring clamps that secure the BOV hose and vent line, then disconnect the lines from the factory intake tube.



5. Loosen the two hose clamps that secure the factory intake tube and then remove the tube from the vehicle.



6. Remove the two bolts that secure the air filter housing and then remove the filter housing from the vehicle.



7. Remove the mass air filter from the factory air filter housing and then remove the O-ring seal from the sensor.



8. Cut the provided edge trim into sections of 10" and 36" and then install the edge trim onto the heat shield as shown.



9. Using the provided hardware attach the mass air sensor to the heat shield as shown.



10. Install the mounting stud to the heat shield as shown.



11. Install the heat shield assembly into the vehicle so the mounting stud inserts into the mounting grommet, then secure with the provided hardware.



12. Install the provided hump coupler onto the turbo inlet and secure with the provided hose clamp.



13. Install the provided straight coupler onto the mass air sensor and secure with the provided hose clamp.



14. Install the provided vent fitting into the K&N intake tube as shown.



15. Install the intake tube into the hump coupler and then into the straight coupler, adjust for best fit and then secure with the provided hose clamps.



16. Connect the BOV hose and the vent line and secure with the provided spring clamp.



17. Reconnect the mass air sensor electrical connection.



18. Install the air filter onto the mass air sensor and secure with the provided hose clamp.



19. Reinstall the fresh air intake duct.



20. Reconnect the vehicle's negative battery cable. Double check to make sure everything is tight and properly positioned before starting the vehicle.

21. It will be necessary for all K&N® high flow intake systems to be checked periodically for realignment, clearance and tightening of all connections. Failure to follow the above instructions or proper maintenance may void warranty.

ROAD TESTING:

1. Start the engine with the transmission in neutral or park, and the parking brake engaged. Listen for air leaks or odd noises. For air leaks secure hoses and connections. For odd noises, find cause and repair before proceeding. This kit will function identically to the factory system except for being louder and much more responsive.

2. Test drive the vehicle. Listen for odd noises or rattles and fix as necessary.

3. If road test is fine, you can now enjoy the added power and performance from your kit.

4. K&N Engineering, Inc., requires cleaning the intake system's air filter element every 100,000 miles. When used in dusty or off-road environments, our filters will require cleaning more often. We recommend that you visually inspect your filter once every 25,000 miles to determine if the screen is still visible. When the screen is no longer visible some place on the filter element, it is time to clean it. To clean and re-oil, purchase our filter Recharger® service kit, part number 99-5050 or 99-5000 and follow the easy instructions.

NOT LEGAL FOR SALE OR USE ON ANY POLLUTION CONTROLLED MOTOR VEHICLE IN CALIFORNIA OR STATES ADOPTING CALIFORNIA EMISSION PROCEDURES.

See knfilters.com for CARB status on each part for a specific vehicle