



Equipped with AEM® Dryflow™ Filter
No Oil Required!

INSTALLATION INSTRUCTIONS

PART NUMBER: 21-8207

2005	DODGE	Durango	V8-5.7L	See * NOTE
2004	DODGE	Durango	V8-5.7L	C.A.R.B. E.O. # D-670

* NOTE: Legal in California only for racing vehicles which may never be used upon a highway

PARTS LIST

Description	Qty.	Part Number
Air Filter Assy. 3.50 X 9" Dry Ele.	1	21-2049DK
Heat Shield	1	20-8207
Inlet Pipe	1	2-82071
Hose, Silicone 3.50x2" Black	1	5-351
Hose; 3/4"ID X 22"L	1	5-4022
Mount, Rubber 1" X 6mm	1	1228599
Spacer, .750 OD X .065 WI X .4	2	2-126
Grommet, 1/2"	1	784634
Rubber Edge Trim 10"	1	8-3010
Edge Trim, 5"	1	8-4005
Neoprene, 1/16" X 4" X 2" Adhes.	1	8-126-2
Helical Bundling Wrap, 1" X 8" Blk.	1	8-508
Bolt, Hex M6-1 X 35mm	1	1-2002
Washer, 6mm Soft Mount	3	559999
Nut, M6 Hex Serrated	2	444.460.04
1/2" Bnd. Hose Clamp, 3.15"-4.00"	3	9456
Hose Clamp, 1 1/4" Narrow	2	4093-8

Read and understand these instructions **BEFORE** attempting to install this product. Failure to follow installation instructions and not using the provided hardware may damage the intake tube, throttle body and engine.

1. Preparing Vehicle

- a. Make sure vehicle is parked on level surface.
- b. Set parking brake.
- c. If engine has run in the past two hours, let it cool down.
- d. Disconnect negative battery terminal.
- e. Raise the front of the vehicle with a jack. Refer to your owner's manual for proper jack and jack stand placement to properly support vehicle. Support your vehicle using properly rated jack stands before wheel removal or while working under the vehicle.

NEVER WORK UNDER A VEHICLE WITHOUT USING JACK STANDS.

- f. Do not discard stock components after removal of the factory system.

2. Removal of stock system



a. Remove one end of the crankcase breather hose from the air box and the other end from the oil fill cap housing.



b. Loosen the hose clamp at the intake air resonator. Pull the intake hose clear of the intake resonator.



c. Remove the two air cleaner housing mounting bolts.



d. Pull the front resonator free of the mounting grommet on the fan shroud. Remove the air cleaner housing/intake tube/front resonator assembly from the engine bay.



e. Unplug the IAT sensor connector and pull the wire harness clip free from the mount on the front of the resonator.



f. Remove the oil fill cap. Put a plastic bag over the opening to prevent parts or debris from falling into the engine.



g. Loosen the two resonator mounting bolts and remove the resonator from the engine bay. Replace the oil fill cap.



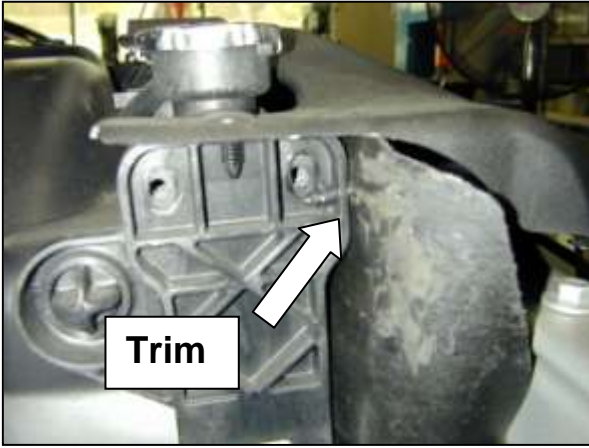
h. Remove the orange rubber gasket from the throttle body.



i. From under the vehicle, loosen but do not remove the passenger side sway bar D-bracket mounting nuts. Use a soft-faced hammer to gently tap the bracket bolts up through the frame rail.



j. Remove the two upper radiator support screws.



k. Trim the excess plastic fan shroud rivet flush with the radiator support.



l. Remove the inlet air temperature (IAT) sensor from the upper resonator by twisting counter-clockwise and pulling straight back. Remove the blue o-ring, it will not be used with the AEM® intake system.

3. Installation of AEM® intake system.

a. When installing the intake system, do not completely tighten the hose clamps or mounting hardware until instructed to do so.



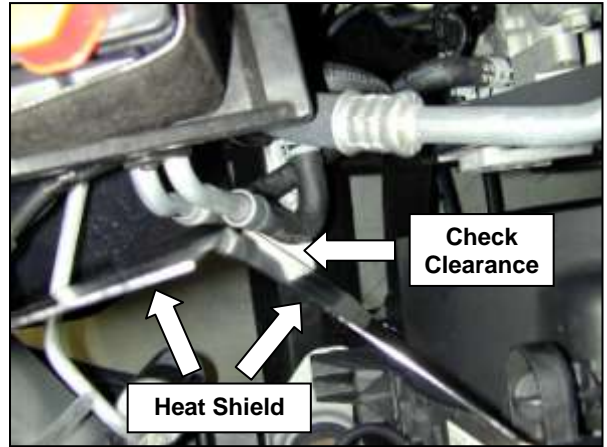
b. Install the two AEM® heat shield spacers into the side of the radiator support.



c. Slide the lower mounting tab of the heat shield under the sway bar d-bracket mounting plate.



d. Install the supplied bolt and washer from underneath the original rubber air box mounting grommet. Secure with another washer and locknut. Reinstall the radiator support screws removed in step 2j. Make sure the spacers remain in place. Do not over tighten.



e. Check clearance between the AEM[®] heat shield and the A/C hard lines. Adjust heat shield and gently bend the hard lines to increase clearance if necessary. Once adequate clearance is achieved, tighten the sway bar D-bracket nuts from beneath the truck.



f. Install the sponge rubber gasket and rubber edge trim to the top edge of the heat shield as shown. Trim length to fit if necessary.



g. Install the supplied IAT grommet into the AEM[®] inlet pipe. Insert the IAT sensor removed in step 2i. Be careful not to push the grommet all the way through into the pipe.



h. Loosely install the silicone coupler and two supplied hose clamps on to the throttle body.



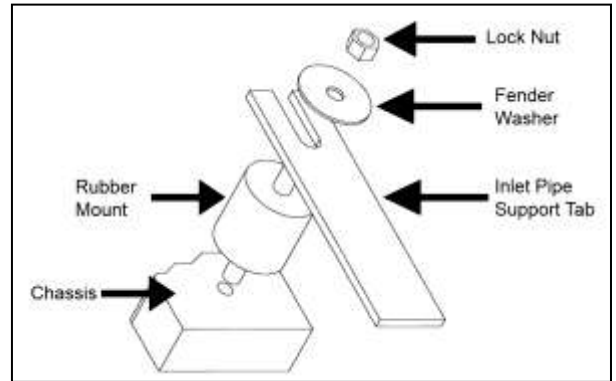
j. Install the supplied M6 rubber mount in the resonator box mounting nut on the passenger side of the intake manifold.



l. Install the supplied breather hose to the crank case vent on the oil filler neck. Secure with the supplied hose clamp.



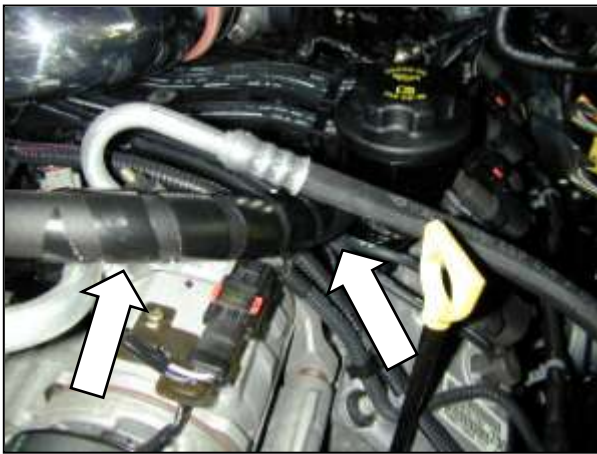
i. Install the air filter onto the end of the AEM® inlet pipe (end furthest from the IAT sensor). Secure with the supplied hose clamp.



k. Install the AEM® inlet pipe into the engine bay. The mounting bracket on the pipe will line up with the rubber mount installed in step 2i. Secure with the fender washer and nylock nut as shown in the diagram.



m. Attach the other end of the breather hose to the nipple on the AEM® inlet pipe. Secure with the supplied hose clamp.



n. Wrap the helical plastic wrap around the breather hose where it passes under the A/C line.



o. Plug in the IAT sensor.



Factory air box system installed



AEM® intake system installed.

4. Reassemble Vehicle

- Position the inlet pipes for the best fitment. Be sure that the pipes or any other components do not contact any part of the vehicle. Tighten the rubber mount, all bolts, and hose clamps.
- Check for proper hood clearance. Re-adjust pipes if necessary and re-tighten them.
- Inspect the engine bay for any loose tools and check that all fasteners that were moved or removed are properly tightened.
- Reconnect negative battery terminals and start engine. Let the vehicle idle for 3 minutes. Perform a final inspection before driving the vehicle.

5. CARB Sticker Placement

- The C.A.R.B. exemption sticker, (attached), must be visible under the hood so that an emissions inspector can see it when the vehicle is required to be tested for emissions. California requires testing every two years, other states may vary.

6. Service and Maintenance

- a. It is recommended that you service your AEM[®] Dryflow™ filter every 20,000 miles for optimum performance. Use AEM Dryflow cleaning kit part # 21-110.
- b. Use aluminum polish to clean your polished AEM[®] intake tube.
- c. Use window cleaner to clean your powder coated AEM[®] intake tube. **(NOTE: DO NOT USE aluminum polish on powder coated AEM intake tubes).**

For technical inquiries
e-mail us at
sales@aemintakes.com
or
call us at
800.992.3000

AEM Air Intake System Warranty Policy

AEM[®] warrants that its intake systems will last for the life of your vehicle. AEM will not honor this warranty due to mechanical damage (i.e. improper installation or fitment), damage from misuse, accidents or flying debris. AEM will not warrant its powder coating if the finish has been cleaned with a hydrocarbon-based solvent. The powder coating should only be cleaned with a mild soap and water solution. Proof of purchase of both the vehicle and AEM intake system is required for redemption of a warranty claim.

This warranty is limited to the repair or replacement of the AEM part. In no event shall this warranty exceed the original purchase price of the AEM part nor shall AEM be responsible for special, incidental or consequential damages or cost incurred due to the failure of this product. Warranty claims to AEM must be transportation prepaid and accompanied with dated proof of purchase. This warranty applies only to the original purchaser of product and is nontransferable. Improper use or installation, use for racing, accident, abuse, unauthorized repairs or alterations voids this warranty. AEM disclaims any liability for consequential damages due to breach of any written or implied warranty on all products manufactured by AEM. Warranty returns will only be accepted by AEM when accompanied by a valid Return Merchandise Authorization (RMA) number. Credit for defective products will be issued pending inspection. Product must be received by AEM within 30 days of the date RMA is issued.

If you have a warranty issue, please call (800) 992-3000 and our customer service department will assist you. A proof of purchase is required for all AEM warranty claims.