



Equipped with AEM® Dryflow™ Filter
No Oil Required!

INSTALLATION INSTRUCTIONS

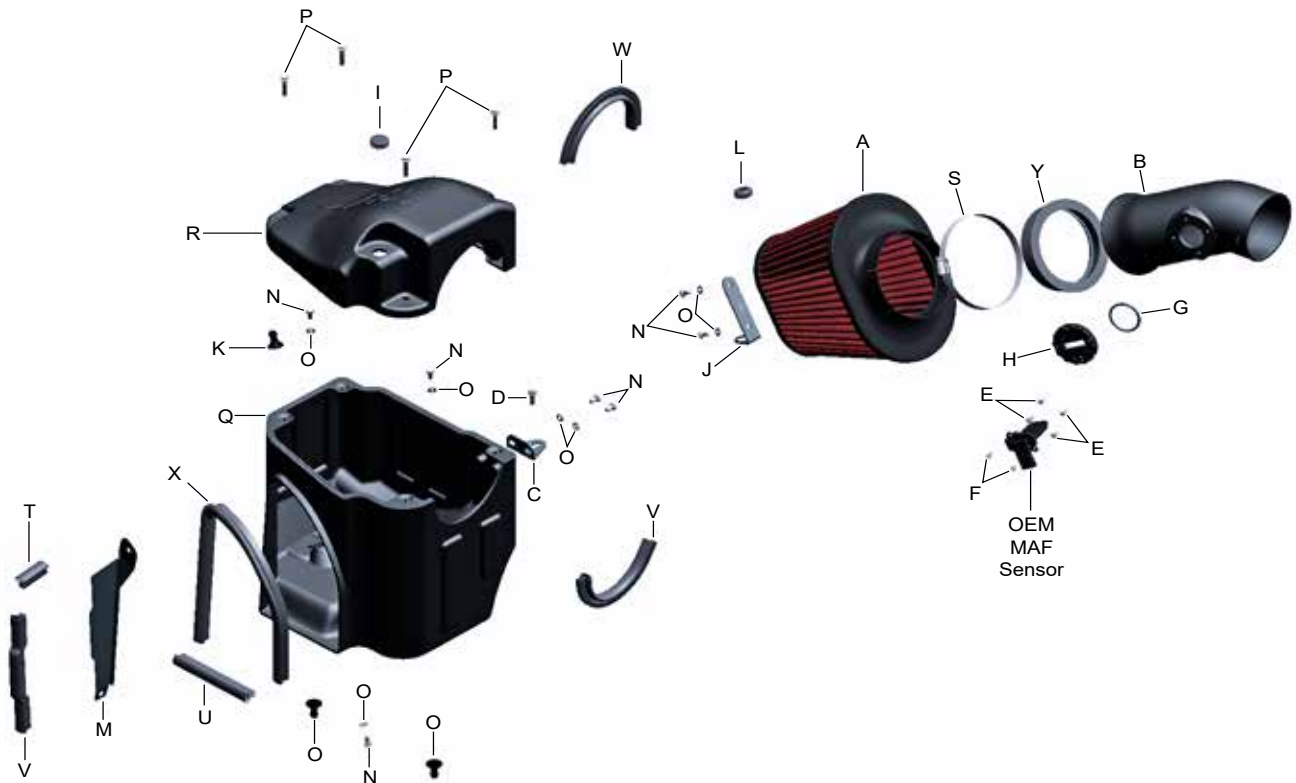
PART NUMBER: 21-9124DS

2011-2014	FORD	F250 Super Duty	V8-6.7L	C.A.R.B. #D-670-14
2011-2014	FORD	F350 Super Duty	V8-6.7L	C.A.R.B. #D-670-14
2011-2014	FORD	F450 Super Duty	V8-6.7L	C.A.R.B. #D-670-14
2011-2014	FORD	F550 Super Duty	V8-6.7L	C.A.R.B. #D-670-14

INTAKE SYSTEMS FOR VEHICLES
LISTED ARE 50 STATE LEGAL. SEE
AEMINTAKES.COM FOR CARB STATUS ON
EACH PART FOR A SPECIFIC VEHICLE.

PARTS LIST

	Description	Qty.	Part Number
A	Filter 5 X 8" Dsl Oval Dry	1	21-2288DK
B	Inlet Tube; Ford F250 Super Duty 6.7l	1	9-0400
C	Bracket; 21-8030, Tube, Tb/pc	1	32-3079
D	Bolt; Hex/flange M6-1 X 20	1	1-2038
E	Bolt; Socket M4-.7 X 8mm	4	1-2105
F	Bolt; Btn Hd M4-0.7 X 6mm	2	1-2051
G	O-ring, Size 223 Buna 50	1	8-182
H	Adapter, Hitachi Maf With O-ring Groove	1	8-181
I	Plug	1	09711
J	Bracket; 21-8124, Air Filter	1	32-3082
K	Nipple, Heat Shield Mount Pres.	3	8-186-1
L	Grommet; 1"od,1/2"id,1/2"thk	1	08064
M	Heat Shield	1	20-8523
N	Bolt; M6 X 1 X 12mm, Hexhead, SS	7	07727
O	Washer, M6 X 12mm Od Zinc	7	1-3018
P	Bolt; Hex/flange M6-1 X 30	4	1-1016
Q	Air Box; Lower	1	9-0410
R	Air Box; Upper	1	9-0409
S	Hose Clamp,4.75-5.50"	1	KITHS80
T	Edge Trim, 3"	1	8-4003
U	Edge Trim, 6"	1	8-4006
V	Edge Trim, 9"	2	8-4009
W	Edge Trim, 10"	1	8-4010
X	Edge Trim, 24"	1	8-4024
Y	Insert, Diesel A/f Assy 5" Tapered	1	5-1068



Read and understand these instructions **BEFORE** attempting to install this product. Failure to follow installation instructions and not using the provided hardware may damage the intake tube, throttle body and engine.

The AEM® intake system is a performance product that can be used safely during mild weather conditions. During harsh and inclement weather conditions, you must return your vehicle to stock OEM airbox and intake tract configuration. Failure to follow these instructions will void your warranty.

1. Preparing Vehicle

- a. Make sure vehicle is parked on level surface.
- b. Set parking brake.
- c. If engine has run in the past two hours, let it cool down.
- d. This vehicle has a dual battery system, disconnect all 4 battery terminals. Disconnect the two negative battery terminals first, then disconnect the positive terminals.
- e. Do not discard stock components after removal of the factory system.

2. Removal of stock system



a. Loosen the hose clamp at the air box neck.



b. Unplug the MAF sensor and unclip the wire harness from the air box.



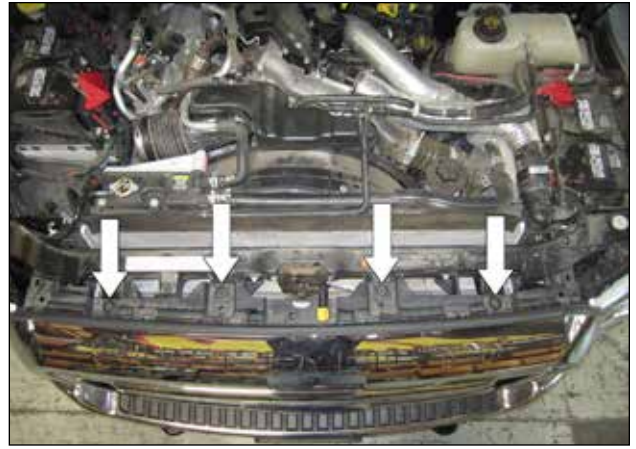
c. Remove the bolt securing the air box in place.



d. Disconnect the intake hose from the air box neck.



e. Remove the OEM air box assembly by firmly lifting up and rocking it side to side to disengage the lower mounts. Remove the stock MAF sensor from the air box and set it aside for future use.



f. Remove the 4 screws attaching the grill.



g. Unclip the plastic clip on the driver's side of the grill.



h. Gently pull the top of the grill forward; using a large flat head screwdriver, push down on the top of each of the 5 metal clips to release the bottom of the grill.



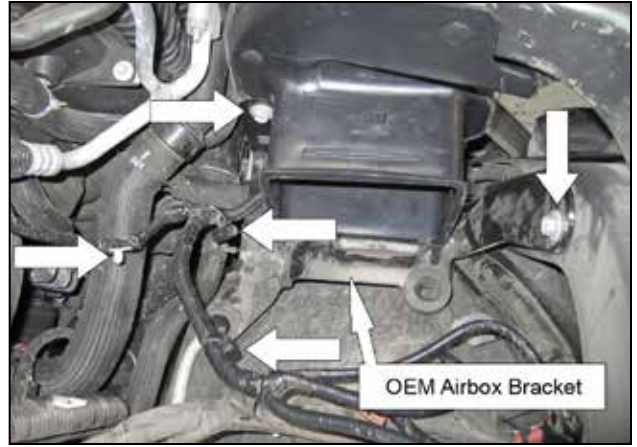
i. Remove the grill.



j. Remove 4 screws securing the headlight in place.



k. Firmly pull out on the headlight and disconnect all 3 plugs.



l. Disconnect the 3 wire harness clips and remove 2 M8 bolts from the OEM air box bracket.



m. Remove the OEM air box bracket.



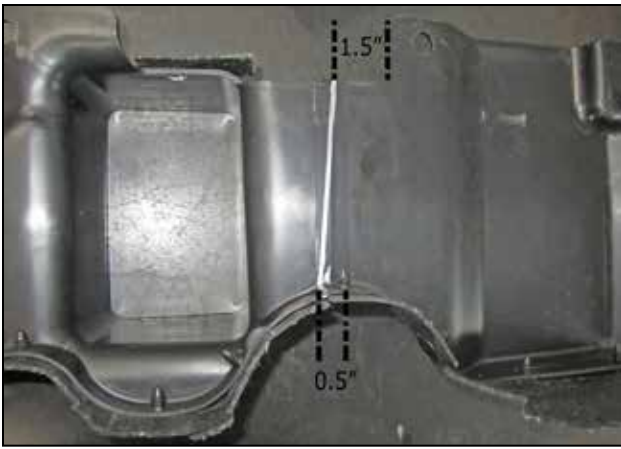
n. Disengage the two plastic clips at the top of the OEM air box inlet duct.



o. Disengage the plastic wire harness clip toward the bottom of the OEM inlet duct.



p. Disengage the final plastic clip at the bottom of the OEM inlet duct and remove the duct.



q. Measure and mark the OEM inlet duct as shown.



r. Using a hack saw or other suitable cutting tool, cut the OEM inlet duct on the line marked previously.



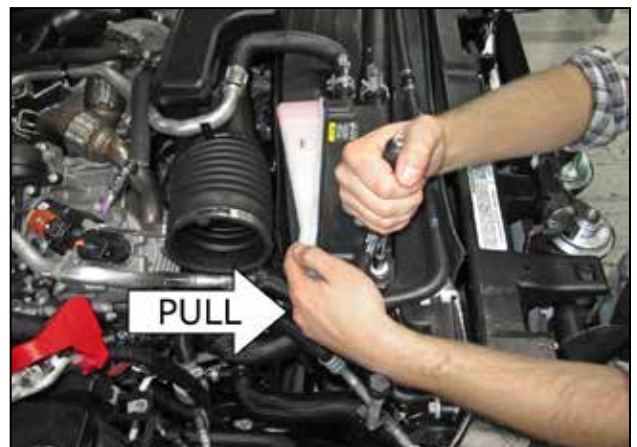
s. After cutting the duct, remove the plastic clip as shown.



t. Remove one of the plastic clips from the top half of the OEM inlet duct to use during installation.



u. Loosen both screws securing the coolant reservoir to the radiator.



v. Firmly pull the coolant reservoir toward the front of the vehicle as far as it will go. While holding the reservoir in place, tighten both screws.

3. Installation of AEM® Intake System

a. When installing the intake system, do not completely tighten the hose clamps or mounting hardware until instructed to do so.



b. Reinstall the lower half of the OEM inlet duct as shown.



c. Reinstall the OEM air box bracket and route the wiring under the bracket as shown.



d. Install the edge trim pieces (8-4003 and 8-4009) on the heat shield (20-8523) as shown. Trim the edge trim as needed.



e. Install the heat shield as shown using the clips from the OEM inlet duct.



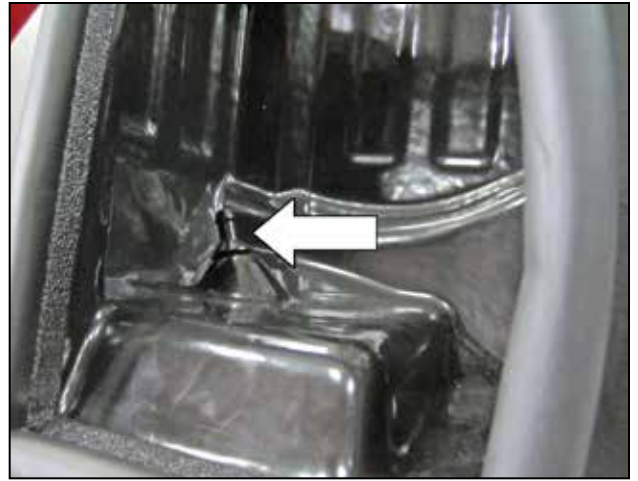
f. Install edge trim (8-4024 & 8-4006) around the AEM® air box (9-0410) inlet as shown. Trim the edge trim as needed.



g. Install the edge trim (8-4009) on the lower side hole of the AEM® air box (9-0410). Also install the mounting bracket (32-3079) using the provided M6 bolts (2 x 1-2065) and washers (2 x 1-3018).



h. Install the 2 barbs (8-186) using the provided M6 bolts (1-2065) and washers (1-3018) as shown.



i. Install 1 barb (8-186) on the inside of the lower air box (9-0410) as shown using 1 M6 bolt (1-2065) and washer (1-3018).



j. Install the lower portion of the AEM® air box (9-0410) as shown and secure with 1 M6 bolt (1-2038). Ensure that the MAF wire harness does not get stuck underneath the air box.



k. Place the o-ring (8-182) in the groove of the AEM® MAF adapter (8-181) as shown.



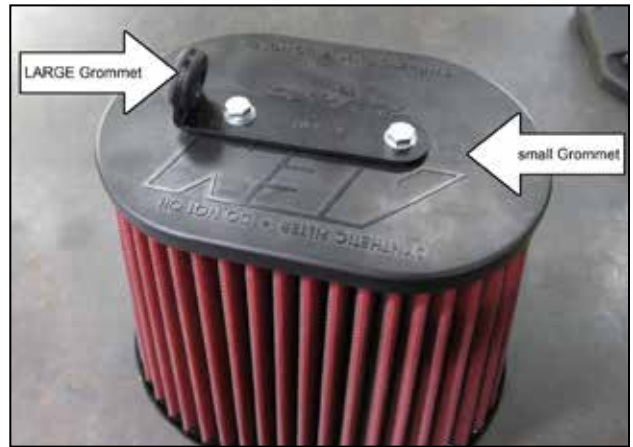
l. Attach the MAF adapter (8-181) to the AEM® intake tube (9-0400) using the provided 4 M4 bolts (1-2105).



m. Install the OEM MAF sensor using 2 M4 bolts (1-2051).



n. Install the filter adapter (5-1068) as shown by stretching it over the flared out end of the AEM® tube (9-0400).



o. Install the air filter bracket (32-3082) using two M6 bolts (1-2065) and washers (1-3018). Also install the large (08064) as shown.



p. Attach the AEM® air filter (21-2288DK) to the intake tube (9-0400) using the provided #80 hose clamp.



q. Install the intake assembly, ensuring the large grommet attached to the air box's bracket engages the barb on the inside of the AEM® air box.



r. Plug in the MAF sensor. Align the AEM® air filter and intake tube for best fitment, then tighten the hose clamps.



s. Install the edge trim (8-4010) on the side hole of the AEM® air box lid (9-0409).



t. Install the plug into the AEM® air box lid (9-0409) as shown.



u. Install the air box lid (9-0409) and secure to the lower air box (9-0410) using the provided 4 M6 bolts (1-1016).



v. Plug in all three headlight plugs, and reinstall the headlight using the 4 screws removed in steps 2j.



w. Reinstall the grille using the 4 screws removed in step 2f.



x. AEM® intake kit installed.

4. Reassemble Vehicle

- a. Position the inlet pipes for the best fitment. Be sure that the pipes or any other components do not contact any part of the vehicle. Tighten the rubber mount, all bolts, and hose clamps.
- b. Check for proper hood clearance. Re-adjust pipes if necessary and re-tighten them.
- c. Inspect the engine bay for any loose tools and check that all fasteners that were moved or removed are properly tightened.
- d. Reconnect the battery terminals and start the engine. Let the vehicle idle for 3 minutes. Perform a final inspection before driving the vehicle.

5. Service and Maintenance

- a. AEM Induction Systems requires cleaning the intake system's air filter element every 100,000 miles. When used in dusty or off-road environments, our filters will require cleaning more often. We recommend that you visually inspect your filter once every 25,000 miles to determine if the screen is still visible. When the screen is no longer visible some place on the filter element, it is time to clean it. To clean, purchase our Synthetic air filter cleaner, part number 99-0624 and follow the easy instructions.
- b. Use aluminum polish to clean your polished AEM® intake tube.
- c. Use window cleaner to clean your powder coated AEM® intake tube. (NOTE: DO NOT USE aluminum polish on powder coated AEM® intake tubes).

6. CARB Sticker Placement

- a. The C.A.R.B. exemption sticker, (attached), must be visible under the hood so that an emissions inspector can see it when the vehicle is required to be tested for emissions. California requires testing every two years, other states may vary.

For technical inquiries
e-mail us at
sales@aemintakes.com
or
call us at
800.992.3000

AEM Air Intake System Warranty Policy

AEM® warrants that its intake systems will last for the life of your vehicle. AEM will not honor this warranty due to mechanical damage (i.e. improper installation or fitment), damage from misuse, accidents or flying debris. AEM will not warrant its powder coating if the finish has been cleaned with a hydrocarbon-based solvent. The powder coating should only be cleaned with a mild soap and water solution. Proof of purchase of both the vehicle and AEM intake system is required for redemption of a warranty claim.

This warranty is limited to the repair or replacement of the AEM part. In no event shall this warranty exceed the original purchase price of the AEM part nor shall AEM be responsible for special, incidental or consequential damages or cost incurred due to the failure of this product. Warranty claims to AEM must be transportation prepaid and accompanied with dated proof of purchase. This warranty applies only to the original purchaser of product and is nontransferable. Improper use or installation, use for racing, accident, abuse, unauthorized repairs or alterations voids this warranty. AEM disclaims any liability for consequential damages due to breach of any written or implied warranty on all products manufactured by AEM. Warranty returns will only be accepted by AEM when accompanied by a valid Return Merchandise Authorization (RMA) number. Credit for defective products will be issued pending inspection. Product must be received by AEM within 30 days of the date RMA is issued.

If you have a warranty issue, please call (800) 992-3000 and our customer service department will assist you. A proof of purchase is required for all AEM warranty claims.

**INTAKE SYSTEMS FOR VEHICLES
LISTED ARE 50 STATE LEGAL. SEE
AEMINTAKES.COM FOR CARB STATUS ON
EACH PART FOR A SPECIFIC VEHICLE.**