

Airaid

Installation Instructions

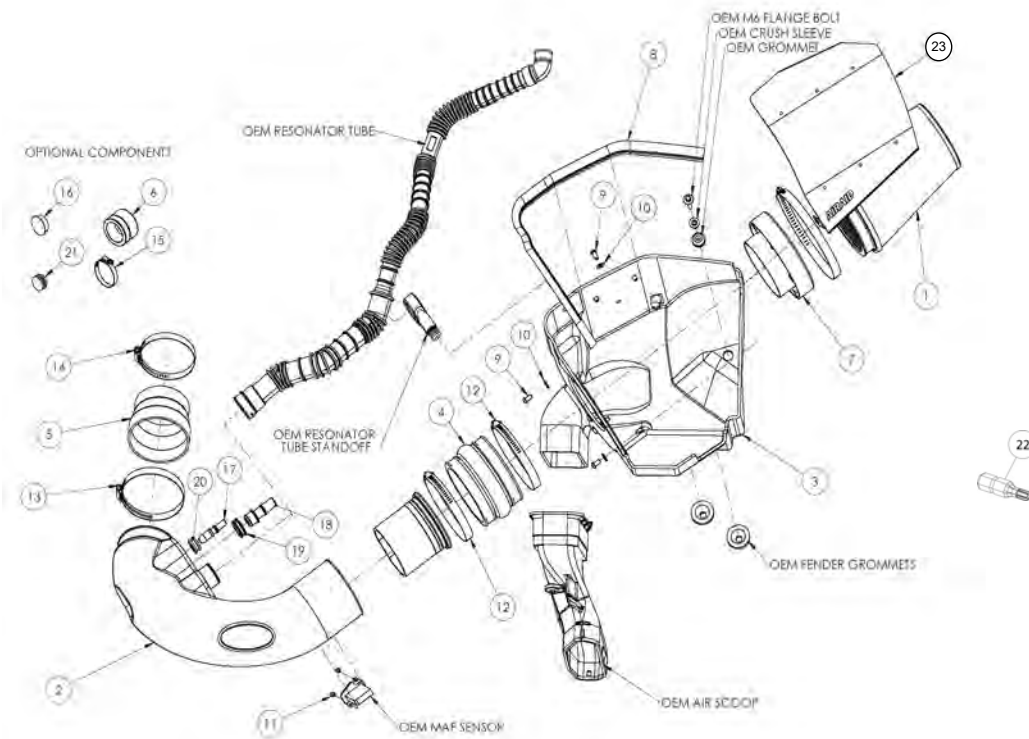
For Part Numbers:

- 450-264 700-461 Airaid Oiled Media Filter
- 451-264 701-461 SynthaMax Dry Media Filter - Red
- 452-264 702-461 SynthaMax Dry Media Filter - Black
- 453-264 703-461 SynthaMax Dry Media Filter - Blue
- 454-264 704-461 SynthaMax Dry Media Filter - Yellow
- 455-264 705-461 Airaid Oiled Media Filter - Yellow

2011-14 Ford Mustang GT
5.0L V8

NOT LEGAL FOR SALE OR USE ON ANY POLLUTION CONTROLLED MOTOR VEHICLE IN CALIFORNIA OR STATES ADOPTING CALIFORNIA EMISSION PROCEDURES.

See AIRAID.COM for CARB status on each part for a specific vehicle.



Component Identification

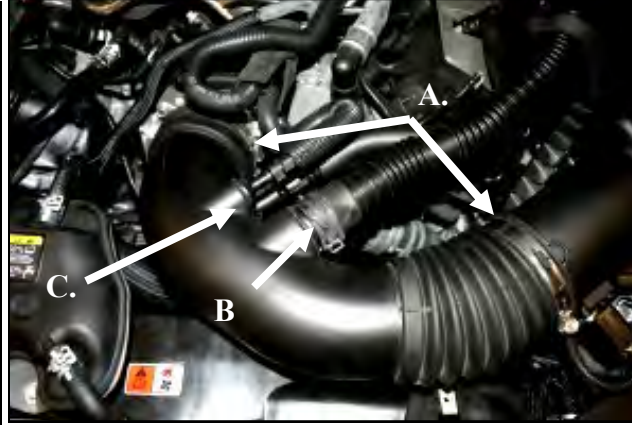
1. 700/701/702/703/704/705-461	Airaid Premium Filter	1
2. KIT264TI	Airaid Intake Tube	1
3. KIT264CAB-1	Cool Air Box	1
4. KITHUMPHS05EPDM	Hump Hose	1
5. KITRDCR18	Reducer	1
6. KITCAP02EPDM	Urethane Cap*	1
7. KIT1121MAFADA	Adapter: MAF	1
8. KITSTRIP20	Windshield Wiper Blade	1
9. KIT15DHC3050	1/4-20 Button Head Bolt	7
10.08275	1/4" Flat Washer	3
11.KIT15BHC3038	8-32 x 3/8" Button Head Bolt	2
12.KITHS72	#72 Hose Clamp	2
13.KITHS64	#64 Hose Clamp	1
14.KITCLAMP60SS	Hose Clamp	1
15.08620	56mm Hose Clamp	1
16.KITPLUG01	Firewall Plug*	1
17.KITFITTING05	3/8" Aluminum Fitting	1
18.KITFITTING15	5/8" Aluminum Fitting	1
19.KITGRMT03	5/8" Grommet	1
20.KITGRMT10	3/8" Grommet	1
21.KITGRMT17-1	Blind Grommet	1
22.KITBIT01	#20 Torx Driver	1
23.KIT264HVS	Rain Shield	1

Full color instructions can be viewed on our web site at Airaid.com. If you need any assistance please call 1-800-858-3333 to speak with a representative in our Customer Service Center before returning the product.

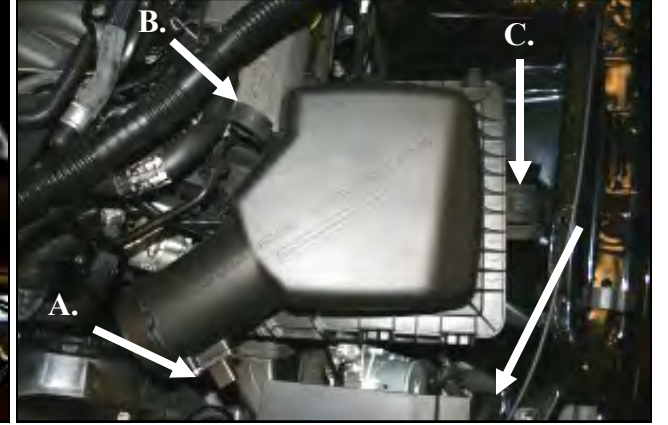


Disconnect The Negative Battery Terminal!

1. Remove the Engine cover by simply lifting up, and set aside.



2. A) Loosen the hose clamps on the factory intake tube B) Squeeze the clamp and disconnect the resonator from the air intake tube. C) Carefully depress the hose lock tabs, and disconnect the crank case breather line and the brake aspirator line (if equipped, AT models only). D) Remove the factory intake tube.



3. A) Slide the red tab, and disconnect the wiring harness from the Mass Air Flow sensor (MAF). Carefully pry the harness anchor from the air box using a screwdriver. B) Separate the resonator tube from the stand off attached to the Air box lid. C) Using a 10mm socket, remove the bolt securing the air box to the inner fender and remove the air box assembly. This bolt will be reused in step 9.



4. Install the Grommets and Fittings into the Airaid intake tube. A) All models will require the use of the 5/8" Fitting and the 5/8" Grommet. B) Automatic transmission equipped vehicles will also use the 3/8" Fitting and 3/8" Grommet. Manual transmission vehicles will not need the 3/8" components and will use the Blind Grommet.



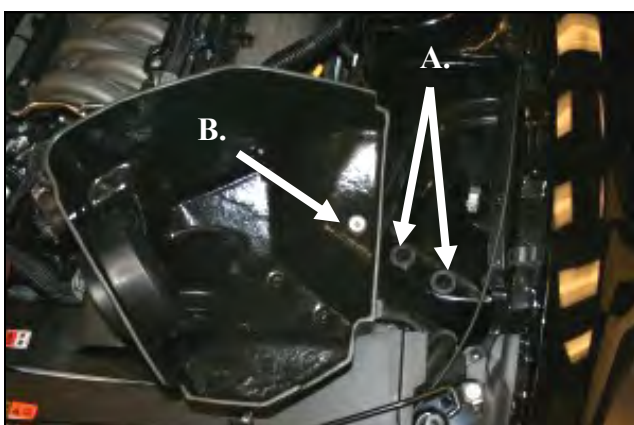
5. Using the supplied Torx driver, remove the MAF sensor from the Factory airbox and create the Tube assembly.

A) Slide the Modular Venturi Tube into the Airaid intake tube making sure to align the two slots for the MAF sensor. B) Install the MAF sensor into the intake tube using two provided 8-32x3/8" screws.

Do Not Use The Factory Screws!



6. Install the filter adapter using three 1/4-20 button head bolts, and flat washers into the Airaid Cool Air Box (CAB) as shown.



7. Transfer the factory air box mounting grommets. A) Locate and remove the Two Lower air box mounting grommets, and install them in the inner fender. B) Remove the Upper air box mounting grommet and steel sleeve, and re-install into the Airaid CAB.



8. Install the hump hose onto the filter adapter using two #72 hose clamps as shown. Leave the two hose clamps loose for now. Transfer the Resonator stand off from the factory air box into the CAB.



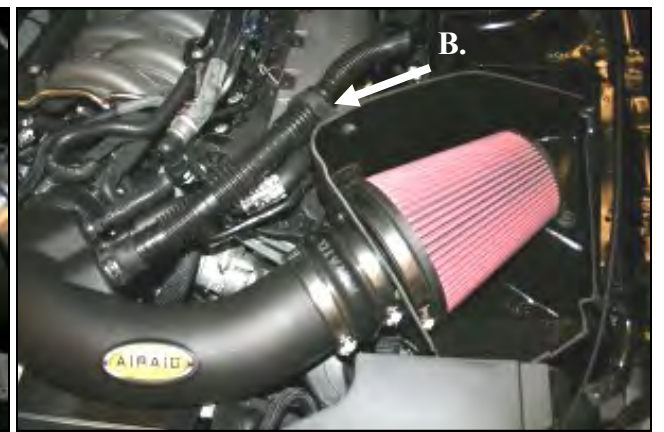
9. Install the CAB into the vehicle. Make sure that the Air inlet of the CAB aligns with the factory duct, and the two locating pins on the bottom align with the factory grommets. Next reinstall the factory bolt that was removed in step #3 thru the steel sleeve and grommet and into the inner fender.



10. Install the Reducer and Hose clamps onto the throttle body. Place the #56 clamp on the Throttle body side of the reducer, and the #64 clamp on to the tube side.



11. Install the Airaid Intake Tube into the couplers as shown, and tighten all Hose clamps. **A)** Reconnect the Resonator tube to the Airaid Intake using the OEM clamp. **B)** Reconnect the breather line/lines to the Aluminum Fittings depending on your application. Apply Airaid Decal As shown



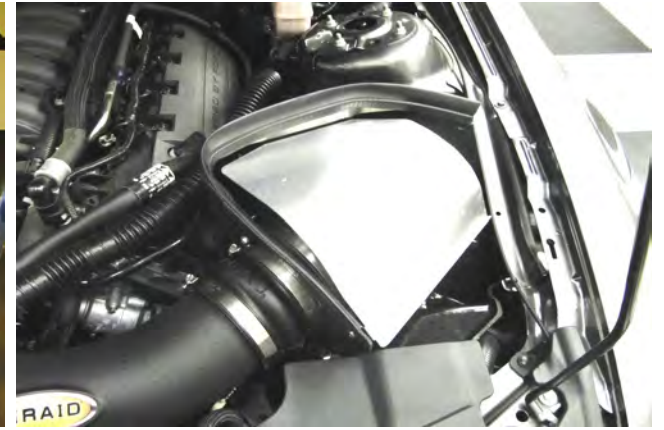
12. **A)** Install the Airaid Premium Filter onto the filter adapter and tighten the hose clamp. **B)** re install the Resonator tubing into the factory Stand off.



13. Reconnect the Mass Air Flow sensor, which is now located in the lower back side of the intake. Slide the locking tab back into the connector.



14. Mount the Rain Shield onto the Airbox as shown using the 1/4-20 Button Head Screws and Washers. **NOTE:** Installation of the Rain Shield is optional but highly recommended for vehicles with Power Dome hoods with heat extractors.



15. Install the Weather Strip onto the CAB with the contoured edge going away from the filter. Start at the front of the vehicle and work your way back. Replace the engine cover.

16. Double check your work!

Make sure there is no foreign material in the intake path. Make sure all clamps, hoses, bolts, and screws are tight. Double check the hood clearance! **Reconnect the negative battery cable!**

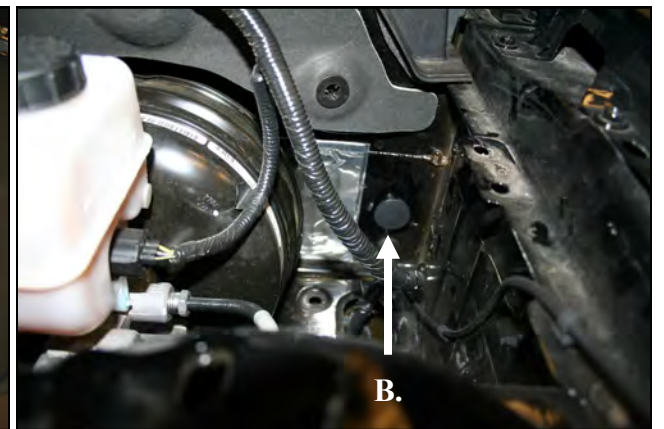
Optional Installation Notice!

Airaid has made it possible to eliminate the factory resonator if you so desire. The removal of the resonator from the intake has no negative effect on the performance of this kit.

Remove the entire Resonator tube assembly and all associated stand offs from the intake tube to the Fire wall.

A.) Install the Urethane cap with the 60mm Hose Clamp onto the Airaid Intake tube.

B.) Snap the Firewall plug into the firewall hole.



Full Color instruction can be viewed on our web site at Airaid.com. Use the Product Search function to find your part number, and click **View Details**.

Thank you for purchasing the Airaid Intake System. Contact Airaid @ (800) 498-6951 8:00 AM - 5:00 PM MST weekdays for questions regarding fit or instructions that are not clear to you. Your Airaid Intake System was carefully inspected and packaged. Check that no parts are missing, or were damaged during shipping. If any parts are missing, contact Airaid. The air filter element is protected from direct exposure to water and debris; care should be taken not to drive through deep water. **WATER INGESTION IS THE DRIVERS RESPONSIBILITY!** The air filter is reusable and should be cleaned periodically.

For your Oiled media filter we suggest using the **AIR AID Filter Tune-Up Kit**



P/N 790-551 Aerosol Spray
P/N 790-550 Squeeze Spray



NOT LEGAL FOR SALE OR USE ON ANY POLLUTION CONTROLLED MOTOR VEHICLE IN CALIFORNIA OR STATES ADOPTING CALIFORNIA EMISSION PROCEDURES.

See AIRAID.COM for CARB status on each part for a specific vehicle.

Synthamax Air Filters **do not** require oil. Service air filter as needed by cleaning with common non-petroleum all-purpose household cleaner and water. Simple Green®, Formula 409® or equivalent works great. Apply cleaner to outside of air filter and allow to soak. Then flush filter clean from the inside out with a garden hose and repeat steps if necessary. Do not apply high pressure water or air to clean filter. Allow filter to air dry and reinstall.