



Installation Instructions

For Part Numbers:

510-761

850-144 Airaid Oiled Media Filter

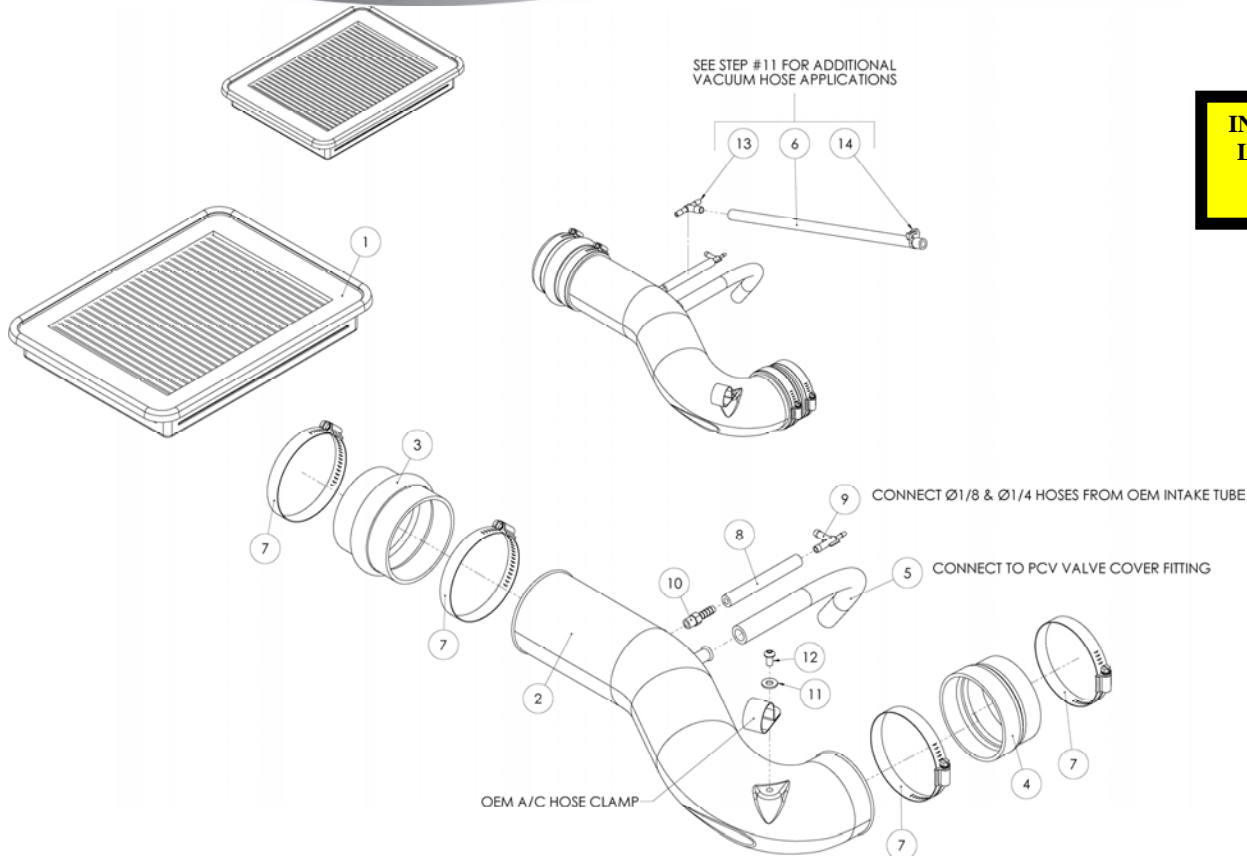
511-761

851-144 SynthaMax Dry Media Filter - Red

2000-04 Toyota Tundra 4.7L V8

2001-04 Toyota Sequoia 4.7L V8

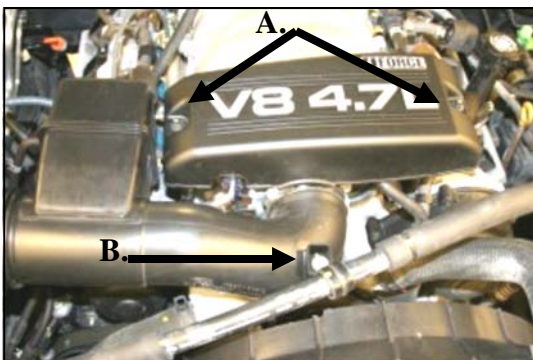
INTAKE SYSTEMS FOR VEHICLES LISTED ARE 50 STATE LEGAL. SEE AIRAID.COM FOR CARB STATUS ON EACH PART FOR A SPECIFIC VEHICLE.



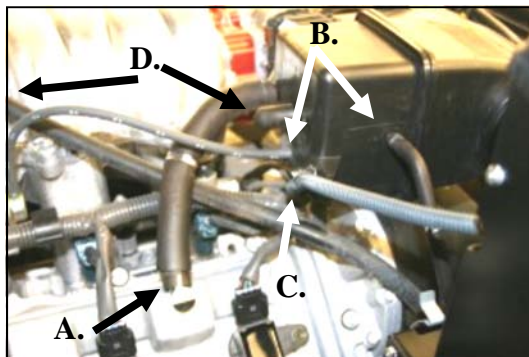
Component Identification

1.	Airaid Premium Filter	1
2.	Modular Intake Tube	1
3.	3 1/2" To 3 3/8" Hump Hose	1
4.	3 1/2" To 3 3/8" Reducer	1
5.	1/2" x 13" Breather Hose	1
6.	3/8" x 17" Hose	1
7.	#52 Hose Clamp	4
8.	1/4" x 4" Hose	1
9.	1/4" x 1/4" x 1/8" Vacuum Tee	1
10.	1/4" Barbx 1/8" NPT Fitting	1
11.	1/4" Flat Washer	1
12.	1/4" x 20 Button Head Bolt	1
13.	1/4" x 1/4" x 3/8" Tee	1
14.	Speed Clamp	1

Full color instructions can be viewed on our web site at Airaid.com. If you need any assistance please call 1-800-858-3333 to speak with a representative in our Customer Service Center before returning the product.



1. **Disconnect negative battery cable.**
A) Remove two 10mm nuts, and remove beauty cover. (Save for reuse). B) Remove the bolt thru the Adel clamp that holds the air conditioning hose.



2. A) Disconnect the breather hose at the valve cover. B) Disconnect 1/4" and 1/8" vacuum lines on the back of the factory intake tube. C) Unclip MAF wire harness retainer from the intake tube. D) *Sequoias and 2000-02 Tundras only; remove 3/8" vacuum hose between factory intake tube and metal fitting on top of the intake manifold. (Hose Not Shown)*



3. Loosen the hose clamps on the intake tube at the throttle body, and at the airbox.



4. Remove the factory intake tube from the vehicle.



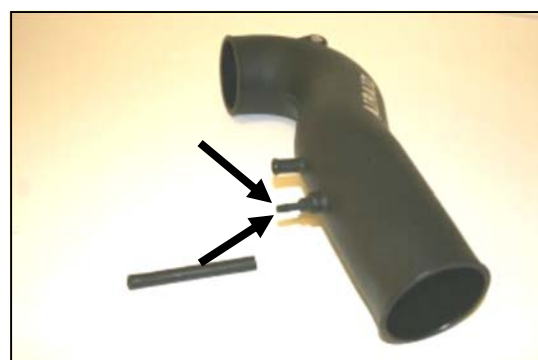
5. Unlatch the 4 clips on the factory airbox, and remove the lid.



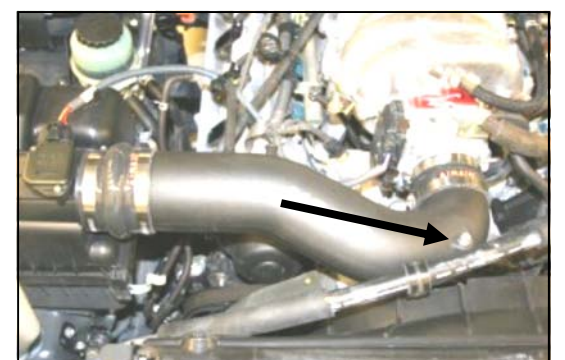
6. Remove the factory air filter, and install the Airaid Premium Filter (#1). Reinstall the factory airbox lid, and latch 4 clips.



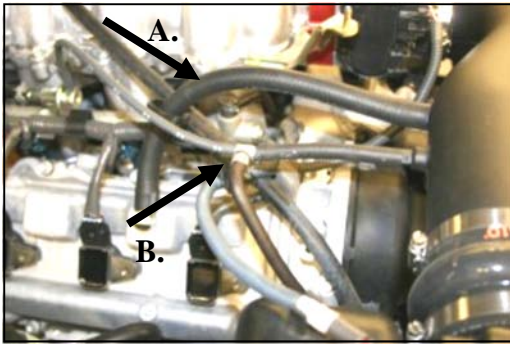
7. Install the hump hose (#3) onto the factory airbox, small end first, with two hose clamps (#6). Next install the reducing coupler (#4), small side first, onto the throttle body with two hose clamps (#7). Leave the clamps loose.



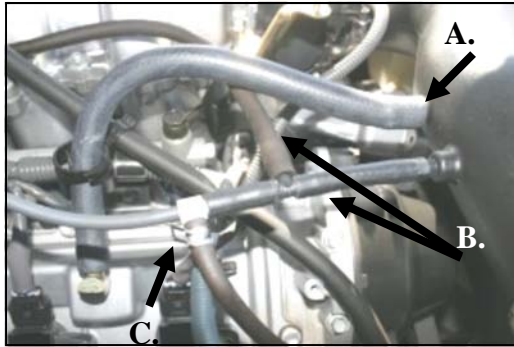
8. Install the 1/4" barb fitting (#10) into the Airaid Modular Intake Tube (#2) as shown. Now slide the 1/4" x 4" hose (#8) onto the barb fitting.



9. Install the MIT into the hump hose first, and then into the reducing coupler. Adjust the MIT snugly against the throttle body, and tighten the 4 hose clamps. Next install the supplied button head bolt (#12) and washer (#11) thru the Adel clamp and into the MIT to hold the air conditioning hose.



10. 03-04 Tundra Pickup & 04 Sequoia
 A) Install the 1/2" x 13" breather hose (#5) from the MIT to the valve cover.
 B) Install the 1/4" x 1/4" x 1/8" vacuum tee (#9) into the 1/4" x 4" hose (#8) and then to the factory 1/4" and 1/8" vacuum lines, as shown.



11. All Other Applications
 A) Install the 1/2" x 13" (#5), breather hose from the MIT to the valve cover. B) Cut the 1/4" x 4" hose (#8) in half, and install the 1/4" x 1/4" x 3/8" tee (#13) between the two halves. Connect the supplied 3/8" x 17" hose (#6), between the tee, and the factory metal fitting above the intake manifold. Squeeze the supplied speed clamp (#14) over the hose at the factory metal fitting. (not shown) C) Install the vacuum tee (#9) into the 1/4" x 4" hose (#8) and then into the factory 1/4" vacuum hose, and 1/8" vacuum hose as shown. Refer to the picture above, or step #2.



12. Reinstall the beauty cover removed in step #1.

13. Double check your work!

Make sure there is no foreign material in the intake path. Make sure all clamps, hoses, bolts, nuts, and screws are tight.

14. Reconnect the negative battery cable!

Thank you for purchasing the Airaid Intake System. Contact Airaid @ (800) 498-6951 8:00 AM - 5:00 PM MST weekdays for questions regarding fit or instructions that are not clear to you. Your Airaid Intake System was carefully inspected and packaged. Check that no parts are missing, or were damaged during shipping. If any parts are missing, contact Airaid. The air filter element is protected from direct exposure to water and debris; care should be taken not to drive through deep water. WATER INGESTION IS THE DRIVERS RESPONSIBILITY! The air filter is reusable and should be cleaned periodically.

FILTER IDENTIFICATION

860-397 Airaid Oiled Media

861-397 Airaid SynthaMax Dry Media - Red

For your Oiled media filter we suggest using the AIRAID Filter Tune-Up Kit!



P/N 790-551 Aerosol Spray
 P/N 790-550 Squeeze Spray



Do Not Oil

Synthamax Air Filters do not require oil. Service air filter as needed by cleaning with common non-petroleum all-purpose household cleaner and water. Simple Green®, Formula 409® or equivalent works great. Apply cleaner to outside of air filter and allow to soak. Then flush filter clean from the inside out with a garden hose and repeat steps if necessary. Do not apply high pressure water or air to clean filter. Allow filter to air dry and reinstall.

INTAKE SYSTEMS FOR VEHICLES LISTED ARE 50 STATE LEGAL. SEE AIRAID.COM FOR CARB STATUS ON EACH PART FOR A SPECIFIC VEHICLE.