



INSTALLATION INSTRUCTIONS

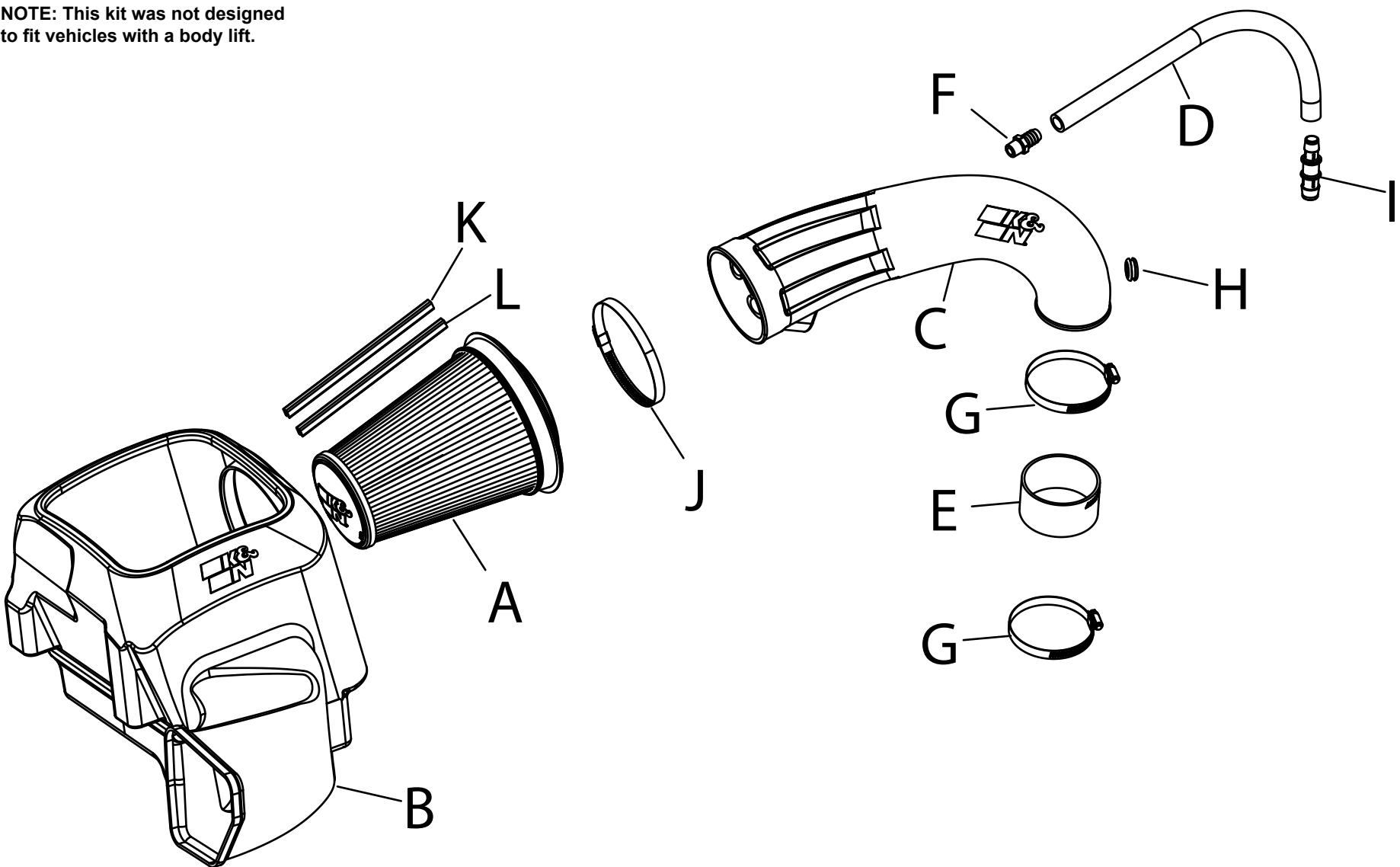
Not legal for sale or use in California on any pollution controlled motor vehicle.

50-1561D DODGE / RAM 2009-18 Ram 1500 2019-24 Ram 1500 Classic 2013-18 Ram 2500 / 3500 V8-5.7L

NOTE: This kit was not designed to fit vehicles with a body lift.

TOOLS NEEDED:

- 8mm Nut Driver
- Flathead Screwdriver
- 13/16" Wrench
- 5/16" Socket / Nut Driver



PARTS LIST:

Description	Qty.	Part #	Description	Qty.	Part #	Description	Qty.	Part #
A DRY AIR FILTER	1	RU-3151HBK	E HOSE; 3.5" X 2"L	1	08698	I CONNECTOR; 3/4" X 5/8"	1	8-171
B AIRBOX	1	087612	F FITTING; 5/8" BARB 3/8" NPT	1	82635	J HOSE CLAMP; #88 BLACK	1	KITHS88K
C TUBE	1	087613	G HOSE CLAMP; #56 BLACK	2	08620KA	K CLIP; SNAP-ON ORANGE	1	088219
D HOSE; 5/8" @ 21"L	1	5-7021	H GROMMET	1	KITGRMT02	L CLIP; SNAP-ON RED	1	088218

If you need any assistance please call 1-800-858-3333 to speak with a representative in our Customer Service Center before returning the product.

NOTE: FAILURE TO FOLLOW INSTALLATION INSTRUCTIONS AND NOT USING THE PROVIDED HARDWARE MAY DAMAGE THE INTAKE TUBE, THROTTLE BODY AND ENGINE.

TO START:

1. Turn off the ignition and disconnect the negative battery cable.
NOTE: Disconnecting the negative battery cable erases pre-programmed electronic memories. Write down all memory settings before disconnecting the negative battery cable. Some radios will require an anti-theft code to be entered after the battery is reconnected. The anti-theft code is typically supplied with your owner's manual. In the event your vehicles anti-theft code cannot be recovered, contact an authorized dealership to obtain your vehicles anti-theft code.



2. Disconnect the IAT sensor electrical connection.



3. Disconnect the CCV hose from the upper air filter housing.



4. Loosen the hose clamp that secures the intake tube to the throttle body.



5. Disconnect the intake tube, lift the air filter housing and remove the complete intake system from the Vehicle.
NOTE: K&N Engineering, Inc., recommends that customers do not discard factory air intake.



6. Remove the complete CCV hardline assembly from the valve cover.



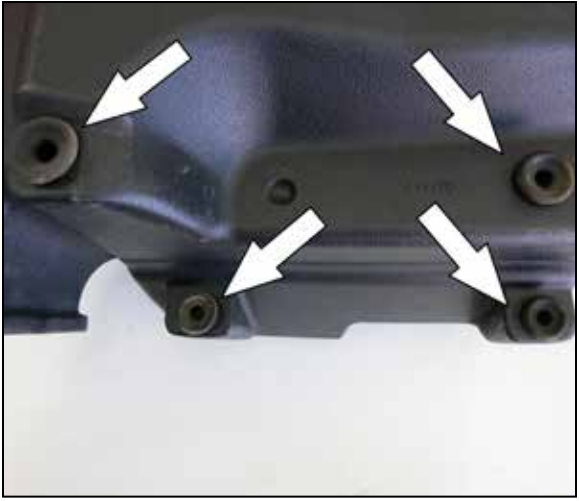
7. Remove the elbow from the plastic hardline.



8. Assemble the provided CCV hose, union fitting and factory CCV elbow as shown.



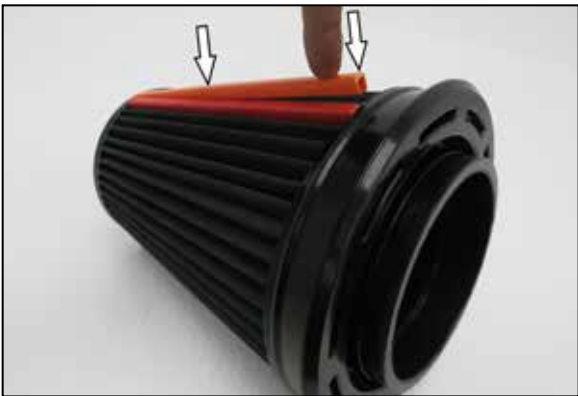
9. Install the CCV hose assembly onto the valve cover port.



10. Remove the four mounting grommets from the factory air filter housing and install them into the K&N air filter housing as shown.



11. Install the K&N air filter housing into the vehicle so the mounting posts protrude through the mounting grommets.



12. Attach the filter clips to the pleats on the air filter align and push down. Passenger side filters, place orange clip on top and red on bottom.



13. Install the K&N air filter into the air filter housing.



14. Install the provided CCV fitting into the K&N intake tube.
NOTE: The CCV fitting utilizes 3/8npt threads, hand tighten and then tighten one revolution with the appropriate size wrench.



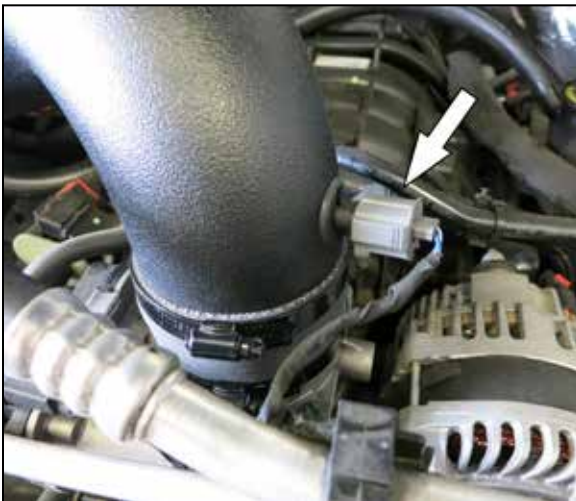
15. Install the provided IAT grommet and coupler hose with clamps. Tighten clamps using 5/16" socket or nut driver.
Note: Do not over tighten clamps.



16. Install the K&N intake tube into the air filter and then onto the throttle body, adjust the tube for best fit and then secure the hose clamps. Tighten clamps using 5/16" socket or nut driver.
Note: Do not over tighten clamps.



17. Connect the CCV hose to the fitting in the intake tube.



18. Remove the IAT sensor from the factory intake system, remove the O-ring from the sensor and then install the sensor into the Grommet installed into the K&N intake tube. Reconnect the IAT electrical connection.



19. Reconnect the vehicle's negative battery cable. Double check to make sure everything is tight and properly positioned before starting the vehicle.

20. It will be necessary for all K&N® high flow intake systems to be checked periodically for realignment, clearance and tightening of all connections. Failure to follow the above instructions or proper maintenance may void warranty.

ROAD TESTING:

1. Start the engine with the transmission in neutral or park, and the parking brake engaged. Listen for air leaks or odd noises. For air leaks secure hoses and connections. For odd noises, find cause and repair before proceeding. This kit will function identically to the factory system except for being louder and much more responsive.
2. Test drive the vehicle. Listen for odd noises or rattles and fix as necessary.
3. If road test is fine, you can now enjoy the added power and performance from your kit.
4. K&N Engineering, Inc., requires cleaning the intake system's air filter element every 50,000 miles. When used in dusty or off-road environments, our filters will require cleaning more often. We recommend that you visually inspect your filter once every 25,000 miles to determine if the screen is still visible. When the screen is no longer visible some place on the filter element, it is time to clean it. To clean, purchase our Synthetic Filter Cleaner, part number 99-0624 and follow the easy instructions.