



AIRCHARGER®

HIGH-FLOW INTAKE KITS

NOT LEGAL FOR SALE OR USE ON ANY POLLUTION CONTROLLED MOTOR VEHICLE IN CALIFORNIA OR STATES ADOPTING CALIFORNIA EMISSION PROCEDURES.
See knfilters.com for CARB status on each part for a specific vehicle

INSTALLATION INSTRUCTIONS

63-1592

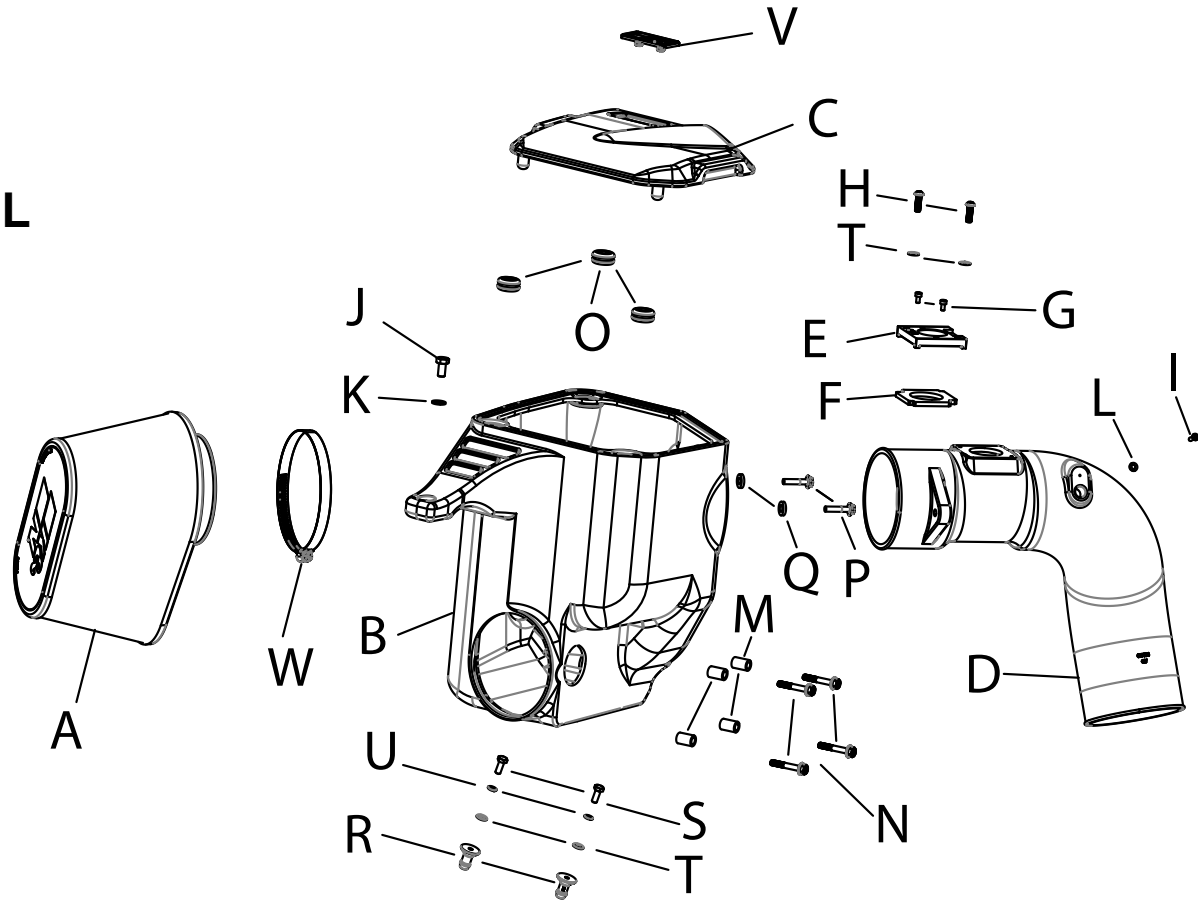
RAM

2013-2018 2500

L6-6.7L TURBO DIESEL

TOOLS NEEDED:

- 1/4" Ratchet
- 13mm socket
- 10mm socket
- 7mm socket
- T27 torx bit
- Flat head screwdriver
- 4mm allen key
- 3mm allen key
- 2.5mm allen key
- Panel popper



PARTS LIST:

Description	Qty.	Part #	Description	Qty.	Part #	Description	Qty.	Part #
A AIR FILTER	1	RU-5297	I SCREW; M4-.7 X 16MM	1	07793	Q WASHER; 1/4"ID X 5/8"OD	2	08275
B AIRBOX	1	087556	J BOLT; 8MM-1.25 X 35MM	1	07784	R MOUNT; PLASTIC AIRBOX	2	8-186-1
C LID	1	087555	K WASHER; 8MM, FLAT, SS	1	08272	S BOLT; M6-1 X 16MM	2	07812
D TUBE	1	087554	L WASHER; 4MM FLAT	1	08278	T WASHER; 6MM FLAT, SS	4	08269
E MASS AIR SENSOR ADAPTOR	1	21507	M SPACER; 1/2"OD AL	4	06558	U WASHER; M6, SPLIT LOCK	2	1-3025
F GASKET	1	09074	N BOLT; M6-1 X 40, HEX/FLANGE	4	1-2075	V BADGE; PLASTIC, SNAP-IN	1	088096
G BOLT; M4-.7 X 8MM	2	07733	O GROMMET 1/2" ID	3	08064	W CLAMP; #80	1	KITHS80
H SCREW; M6 X 20MM	2	KIT20BHC3060	P BOLT; M6-1 X 30	2	1-1016			

If you need any assistance please call 1-800-858-3333 to speak with a representative in our Customer Service Center before returning the product.

NOTE: FAILURE TO FOLLOW INSTALLATION INSTRUCTIONS AND NOT USING THE PROVIDED HARDWARE MAY DAMAGE THE INTAKE TUBE, THROTTLE BODY AND ENGINE.

TO START:

1. Turn off the ignition and disconnect the negative battery cable.
NOTE: Disconnecting the negative battery cable erases pre-programmed electronic memories. Write down all memory settings before disconnecting the negative battery cable. Some radios will require an anti-theft code to be entered after the battery is reconnected. The anti-theft code is typically supplied with your owner's manual. In the event your vehicles anti-theft code cannot be recovered, contact an authorized dealership to obtain your vehicles anti-theft code.



2. Loosen the hose clamp that secures the factory intake tube to the air filter housing. Disconnect the air sensor electrical connections.



3. Loosen the three bolts that secure the air filter housing lid and then remove the lid.



4. Remove the bolt that secures the lower air filter housing to the core support.



5. Lift the lower air filter housing up enough to gain access to the diverter door electrical connection, disconnect the diverter door electrical connection and then remove the lower air filter housing.



6. Loosen the hose clamp that secure the factory intake tube silencer to the turbo inlet elbow.



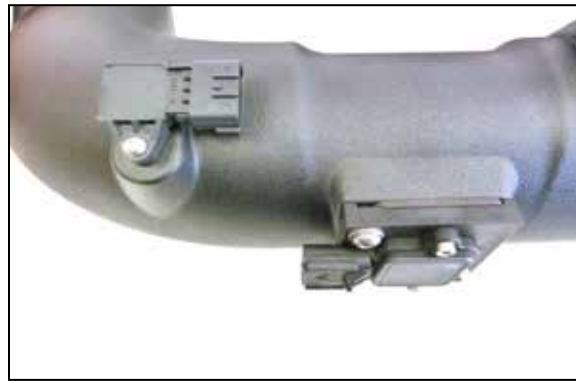
10. Install the mounting studs onto the K&N air filter housing using the provided hardware.



14. Reconnect the air sensor electrical connections.



7. Remove the four bolts that secure the diverter door motor to the lower air filter housing.



11. Install the two sensors into the K&N intake tube using the provided adapter and hardware.



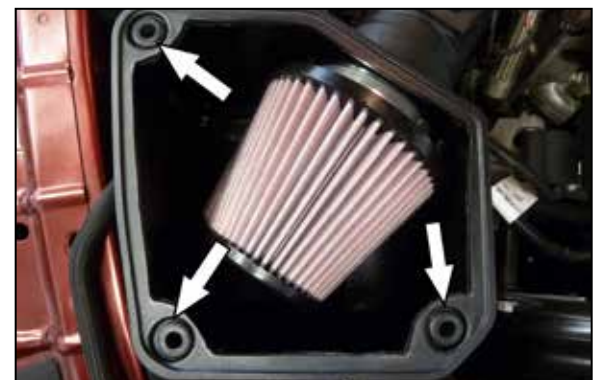
15. Install the K&N air filter onto the intake tube and secure with the provided hose clamp.



8. Pull the diverter door motor partially out of the air filter housing, then using a panel popper tool or similar device pry the diverter door off the motor shaft.



12. Install the K&N intake tube into the factory turbo inlet elbow, do not tighten the hose clamp.



16. Install the three lid mounting grommets into the air filter housing.



9. Install the diverter door motor onto the K&N air filter housing using the provided hardware.



13. Install the K&N air filter housing into the vehicle so the mounting studs insert into the mounting grommets and the intake tube fits through the hole. Mount the tube to the air filter housing and the housing to the core support using the provided hardware. Tighten the hose clamp that secure the intake tube to the elbow.



17. Install the K&N lid onto the air filter housing and snap the logo into the lid.



18. Reconnect the vehicle's negative battery cable. Double check to make sure everything is tight and properly positioned before starting the vehicle.

19. It will be necessary for all K&N® high flow intake systems to be checked periodically for realignment, clearance and tightening of all connections. Failure to follow the above instructions or proper maintenance may void warranty.

ROAD TESTING:

1. Start the engine with the transmission in neutral or park, and the parking brake engaged. Listen for air leaks or odd noises. For air leaks secure hoses and connections. For odd noises, find cause and repair before proceeding. This kit will function identically to the factory system except for being louder and much more responsive.
2. Test drive the vehicle. Listen for odd noises or rattles and fix as necessary.
3. If road test is fine, you can now enjoy the added power and performance from your kit.
4. K&N Engineering, Inc., requires cleaning the intake system's air filter element every 100,000 miles. When used in dusty or off-road environments, our filters will require cleaning more often. We recommend that you visually inspect your filter once every 25,000 miles to determine if the screen is still visible. When the screen is no longer visible some place on the filter element, it is time to clean it. To clean and re-oil, purchase our filter Recharger® service kit, part number 99-5050 or 99-5000 and follow the easy instructions.

NOT LEGAL FOR SALE OR USE ON ANY POLLUTION CONTROLLED MOTOR VEHICLE IN CALIFORNIA OR STATES ADOPTING CALIFORNIA EMISSION PROCEDURES.

See knfilters.com for CARB status on each part for a specific vehicle