



AIRCHARGER®

HIGH-FLOW INTAKE KITS

NOT LEGAL FOR SALE OR USE ON ANY POLLUTION CONTROLLED MOTOR VEHICLE IN CALIFORNIA OR STATES ADOPTING CALIFORNIA EMISSION PROCEDURES.
See knfilters.com for CARB status on each part for a specific vehicle

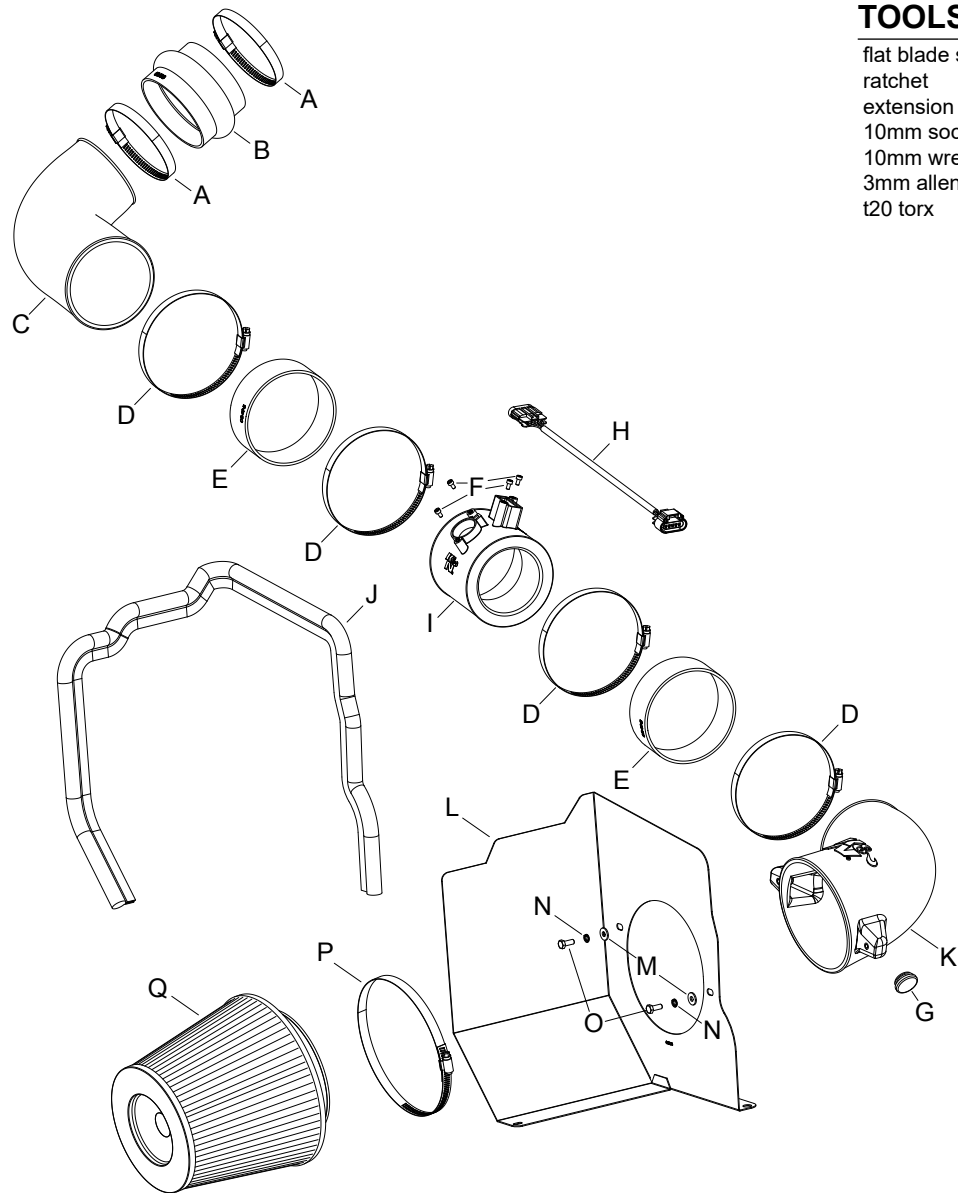
INSTALLATION INSTRUCTIONS

63-3087
CHEVROLET / GMC
2015-16 Silverado 2500 / 3500 HD
2015-16 Sierra 2500 / 3500 HD
V8-6.6L Turbo Diesel

NOTE: This kit was not designed to fit vehicles with a body lift.

PARTS LIST:

Description	Qty.	Part #
A HOSE CLAMP #64 STAINLESS	2	08645
B HOSE; HUMP 4"ID TO 4.19"ID X 3"L	1	08633
C INTAKE TUBE; (IK)	1	087253A
D HOSE CLAMP #80 STAINLESS	4	08685
E HOSE; 4-3/4"ID X 1-3/4"L	2	08495
F BOLT; M4-.7 X 8MM ALNHD	4	07733
G PLUG; 1-3/16"OD X .75"ID X 7/16"HT	1	09711
H EXTENSION HARNESS; 18"L GM MAF	1	21782
I ADAPTER; MAF SENSOR HOUSING	1	088037-1
J EDGE TRIM; (44"L)	1	102486
K INTAKE TUBE; (IL)	1	087254A
L HEAT SHIELD	1	073176
M WASHER; 6MM FLAT	2	08269
N WASHER; M6 SPLIT LOCK ZINC	2	1-3025
O BOLT; M6-1 X 16MM, HEX	2	07812
P HOSE CLAMP #104	1	08697
Q AIR FILTER	1	RU-5179



TOOLS NEEDED:

- flat blade screw driver
- ratchet
- extension
- 10mm socket
- 10mm wrench
- 3mm allen wrench
- t20 torx

If you need any assistance please call 1-800-858-3333 to speak with a representative in our Customer Service Center before returning the product.

NOTE: FAILURE TO FOLLOW INSTALLATION INSTRUCTIONS AND NOT USING THE PROVIDED HARDWARE MAY DAMAGE THE INTAKE TUBE, THROTTLE BODY AND ENGINE.

TO START:

1. Turn off the ignition and disconnect the negative battery cable.

NOTE: Disconnecting the negative battery cable erases pre-programmed electronic memories. Write down all memory settings before disconnecting the negative battery cable. Some radios will require an anti-theft code to be entered after the battery is reconnected. The anti-theft code is typically supplied with your owner's manual. In the event your vehicles anti-theft code cannot be recovered, contact an authorized dealership to obtain your vehicles anti-theft code.



2. Disconnect the mass air sensor and humidity sensor electrical connections.



3. Loosen the hose clamps securing the factory intake hose to the air box and turbo inlet.



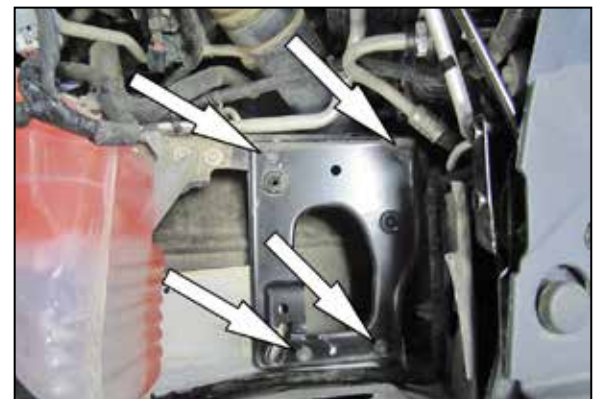
4. Lift up the hood seal trim and remove the bolt securing the fender brace.



5. Loosen the bolt securing the fender brace to the core support then swing the brace clockwise towards the radiator for clearance.

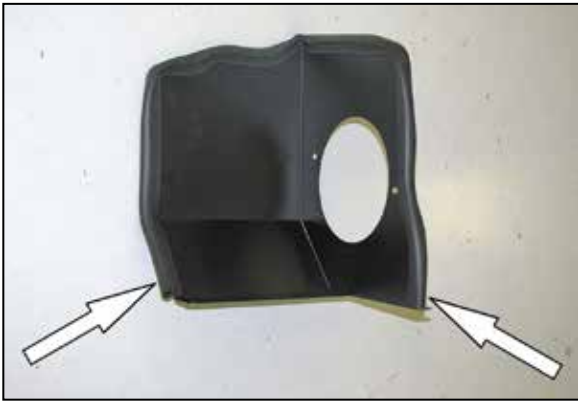


6. Lift up and remove the air box from the vehicle. **NOTE: K&N Engineering, Inc., recommends that customers do not discard factory air intake.**



7. Remove the four bolts securing the air box mounting tray and then remove the tray from the vehicle.

NOTE: Three of these bolts will be reused in a latter step.



8. Install the provided edge trim onto the heat shield as shown.

NOTE: Some trimming of the edge trim will be necessary.



9. Install the K&N® heat shield onto the air box mounting plate tabs and secure with the three of the bolts removed in step #7.



10. Set the K&N® air filter into the heat shield as shown.



11. On vehicles equipped with a filter minder, remove the filter minder and grommet from the intake tube and install into the K&N intake tube. On vehicles that are not equipped with a filter minder, drill the hole in the K&N intake tube out to 7/8" ID and then install the provided plug into the tube.



12. Install the K&N® intake tube into the heat shield and secure with the provided hardware and then install the K&N® air filter onto the K&N® intake tube and secure with the provided hose clamp.



13. Remove the screws securing the Mass air sensor and Humidity sensor into the factory air box and then remove the sensors.



14. Install the sensors into the K&N® Mass air sensor housing and secure with the provided hardware.



15. Install the two provided hoses (08495) onto the mass air housing and secure with the provided hose clamps.



16. Install the Mass air assembly onto the K&N® intake tube as shown and secure with the provided hose clamps.

NOTE: Be sure to install the housing the correct direction, the reduced id end of the housing should be towards the air filter when correctly installed.



17. Install the provided hump hose (08633) onto the turbo inlet and secure with the provided hose clamp.



18. Install the K&N® intake tube into the hose at the Mass air sensor and then into the hose at the turbo inlet, adjust the tubes for best fit and then secure with the provided hose clamps.



19. Connect the provided Mass air sensor extension harness into the factory harness and then reconnect the Mass air sensor and humidity sensor electrical connections.



20. Reconnect the vehicle's negative battery cable. Double check to make sure everything is tight and properly positioned before starting the vehicle.

21. It will be necessary for all K&N® high flow intake systems to be checked periodically for realignment, clearance and tightening of all connections. Failure to follow the above instructions or proper maintenance may void warranty.

ROAD TESTING:

1. Start the engine with the transmission in neutral or park, and the parking brake engaged. Listen for air leaks or odd noises. For air leaks secure hoses and connections. For odd noises, find cause and repair before proceeding. This kit will function identically to the factory system except for being louder and much more responsive.

2. Test drive the vehicle. Listen for odd noises or rattles and fix as necessary.

3. If road test is fine, you can now enjoy the added power and performance from your kit.

4. K&N Engineering, Inc., requires cleaning the intake system's air filter element every 100,000 miles. When used in dusty or off-road environments, our filters will require cleaning more often. We recommend that you visually inspect your filter once every 25,000 miles to determine if the screen is still visible. When the screen is no longer visible some place on the filter element, it is time to clean it. To clean and re-oil, purchase our filter Recharger® service kit, part number 99-5050 or 99-5000 and follow the easy instructions.

NOT LEGAL FOR SALE OR USE ON ANY POLLUTION CONTROLLED MOTOR VEHICLE IN CALIFORNIA OR STATES ADOPTING CALIFORNIA EMISSION PROCEDURES.

See knfilters.com for CARB status on each part for a specific vehicle