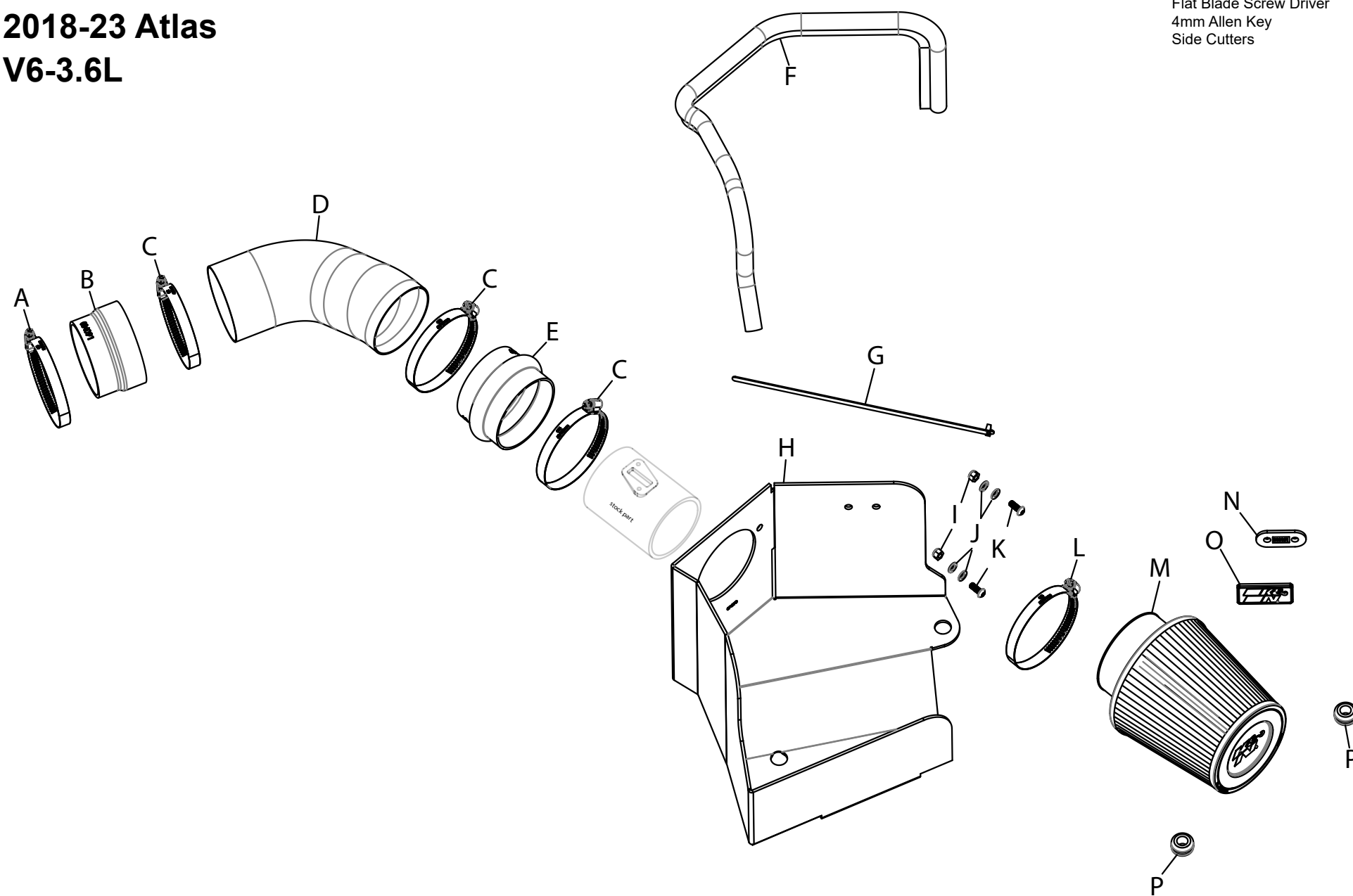


INSTALLATION INSTRUCTIONS

69-9756TC
VOLKSWAGEN
2018-23 Atlas
V6-3.6L

TOOLS NEEDED:

- Ratchet
- Extension
- 25 Torx Socket
- Flat Blade Screw Driver
- 4mm Allen Key
- Side Cutters



PARTS LIST:

Description	Qty.	Part #	Description	Qty.	Part #	Description	Qty.	Part #
A HOSE CLAMP; #52	1	08610	F EDGE TRIM; (55"L)	1	102480	K BOLT; M6 X 1 X 16MM, BTNHD	2	07730
B HOSE; 3.25"ID TO 3.5"ID	1	084091	G CABLE TIES; 11" BLK	1	21590	L HOSE CLAMP; #60	1	08624
C HOSE CLAMP; #56	3	08620	H HEAT SHIELD	1	074573	M AIR FILTER	1	RE-0950
D TUBE; 3.5"OD X 12"L (AL)	1	25929C	I NUT; 6MM NYLOCK, HEXHD	2	07512	N PLATE; LOCKING, K&N BADGE	1	010151
E HOSE; HUMP 3.5"ID X 2.5"L	1	08699	J WASHER; 6MM FLAT	4	08269	O BADGE; PLASTIC, SNAP-IN	1	088096
						P GROMMET; 1"OD, 1/2"ID	2	08064

If you need any assistance please call 1-800-858-3333 to speak with a representative in our Customer Service Center before returning the product.

NOTE: FAILURE TO FOLLOW INSTALLATION INSTRUCTIONS AND NOT USING THE PROVIDED HARDWARE MAY DAMAGE THE INTAKE TUBE, THROTTLE BODY AND ENGINE.

TO START:

1. Turn off the ignition and disconnect the negative battery cable.
NOTE: Disconnecting the negative battery cable erases pre-programmed electronic memories. Write down all memory settings before disconnecting the negative battery cable. Some radios will require an anti-theft code to be entered after the battery is reconnected. The anti-theft code is typically supplied with your owner's manual. In the event your vehicles anti-theft code cannot be recovered, contact an authorized dealership to obtain your vehicles anti-theft code.



2. Remove the two screws securing the fresh air duct and then remove the duct from the engine compartment.



3. Loosen the hose clamps that secure the factory intake tube and remove the tube from the vehicle. Disconnect the mass air sensor electrical connection.



4. Pull the air filter housing straight up to dislodge it from the mounting grommets and remove it from the vehicle.



5. Remove the screws that secure the mass air sensor to the air filter housing and then remove the mass air sensor from the air filter housing.



6. Install the provided edge trim onto the heat shield as shown. **NOTE: it will be necessary to trim the edge trim.**



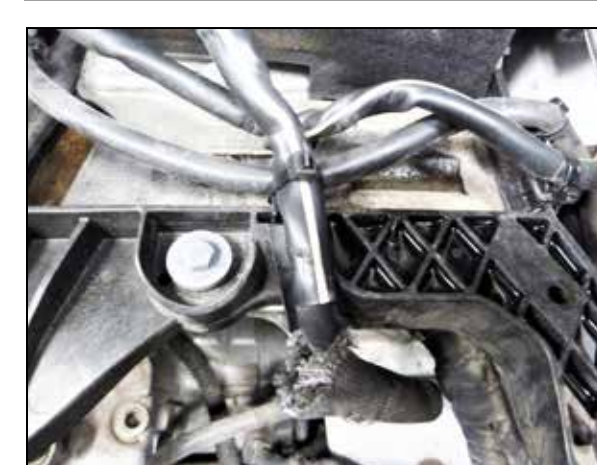
7. Install the two provided grommets into the heat shield as shown.



8. Install the mass air sensor onto the heat shield using the provided hardware.



9. Install the K&N badge onto the heat shield.



10. Cut the factory wire ties that secure the wiring harness, relocate the harness to the top of the tray as shown and secure with the provided wire tie.



11. Set the heat shield assembly into the position on the factory mounting studs.



12. Install the provided coupler onto the throttle body and secure with the provided hose clamp.



13. Install the provided hump coupler onto the mass air sensor and secure with the provided hose clamp.



14. Install the K&N intake tube into the couplers, align for best fit and then secure with the provided hose clamps.



15. Reconnect the mass air sensor electrical connection.



16. Install the K&N air filter and secure with the provided hose clamp.



17. Reconnect the vehicle's negative battery cable. Double check to make sure everything is tight and properly positioned before starting the vehicle.

18. It will be necessary for all K&N® high flow intake systems to be checked periodically for realignment, clearance and tightening of all connections. Failure to follow the above instructions or proper maintenance may void warranty.

ROAD TESTING:

1. Start the engine with the transmission in neutral or park, and the parking brake engaged. Listen for air leaks or odd noises. For air leaks secure hoses and connections. For odd noises, find cause and repair before proceeding. This kit will function identically to the factory system except for being louder and much more responsive.

2. Test drive the vehicle. Listen for odd noises or rattles and fix as necessary.

3. If road test is fine, you can now enjoy the added power and performance from your kit.

4. K&N Engineering, Inc., requires cleaning the intake system's air filter element every 100,000 miles. When used in dusty or off-road environments, our filters will require cleaning more often. We recommend that you visually inspect your filter once every 25,000 miles to determine if the screen is still visible. When the screen is no longer visible some place on the filter element, it is time to clean it. To clean and re-oil, purchase our filter Recharger® service kit, part number 99-5050 or 99-5000 and follow the easy instructions.

NOT LEGAL FOR SALE OR USE ON ANY POLLUTION CONTROLLED MOTOR VEHICLE IN CALIFORNIA OR STATES ADOPTING CALIFORNIA EMISSION PROCEDURES.

See knfilters.com for CARB status on each part for a specific vehicle