



NOT LEGAL FOR SALE OR USE ON ANY POLLUTION CONTROLLED MOTOR VEHICLE IN CALIFORNIA OR STATES ADOPTING CALIFORNIA EMISSION PROCEDURES.
See knfilters.com for CARB status on each part for a specific vehicle

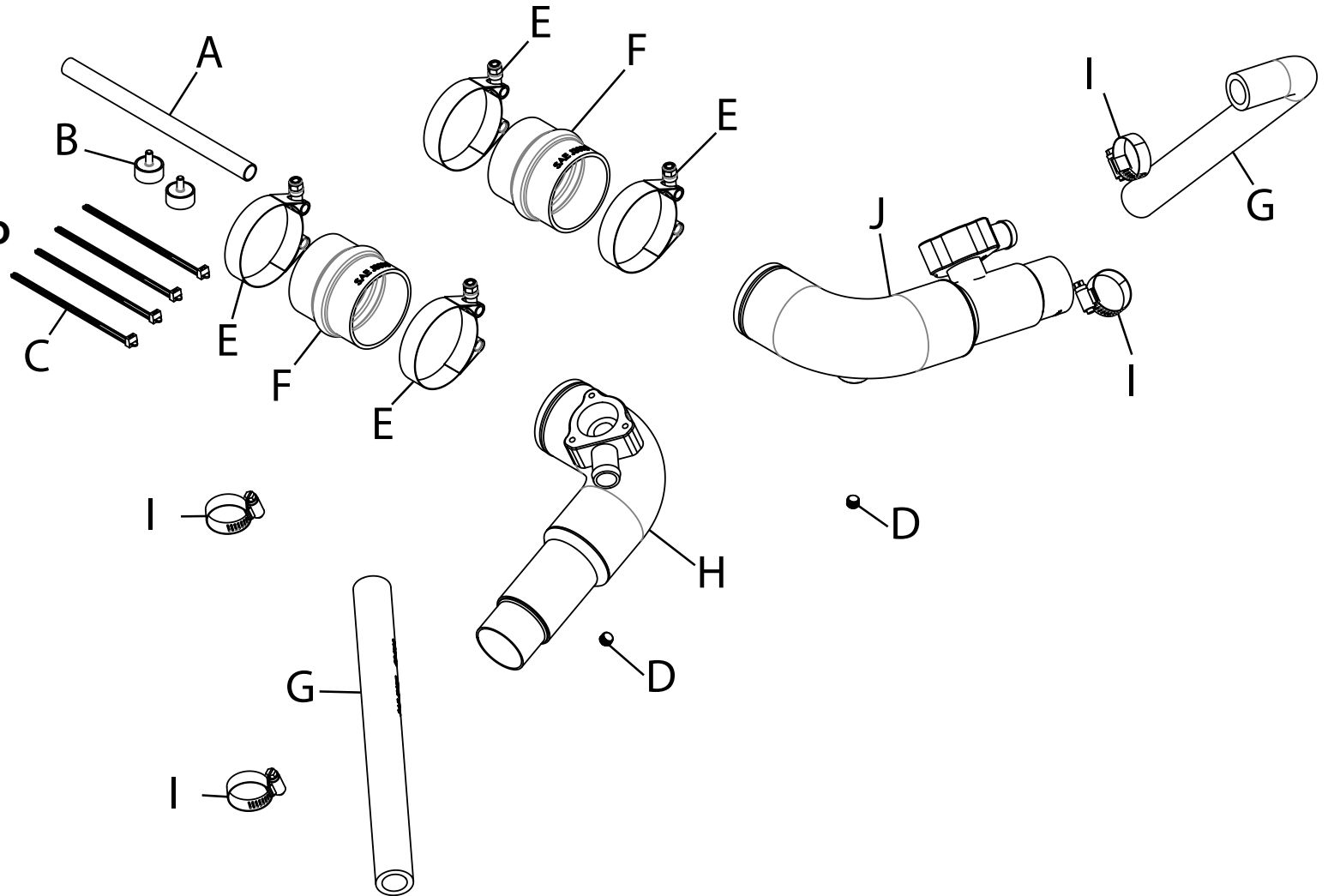
INSTALLATION INSTRUCTIONS

77-1013KC TOYOTA 2022-24 Tundra 2023-24 Sequoia V6-3.4L Twin Turbo

NOTE: This kit was not designed to fit vehicles with a body lift.

TOOLS NEEDED:

Flat Blade Screw Driver
Phillips Screw Driver
Pliers
3/16" Allen Key
Ratchet
Extension
8mm Socket
10mm Socket
11mm Socket
T30 Torx
Knife



PARTS LIST:

Description	Qty.	Part #	Description	Qty.	Part #	Description	Qty.	Part #
A LOOM; 5/8" X 9" SPLIT	1	AIR-KITLOOM15	D PLUG; STAINLESS STEEL 1/8"	2	1-1014	G HOSE; 7/8"ID X 25"L	1	084138
B STUD; RUBBER, 1/2"L X 1"W	2	070228	E HOSE CLAMP; T-BOLT #312	4	21852	H TUBE; (PS) 2"OD TO 2.25"OD	1	25895C
C CABLE TIES; 6"	4	21591	F HOSE; HUMP 2.75"ID X 3"L	2	08439	I HOSE CLAMP; #16	4	08413
						J TUBE; (DS) 2"OD TO 2.25"OD	1	25894C

If you need any assistance please call 1-800-858-3333 to speak with a representative in our Customer Service Center before returning the product.

NOTE: FAILURE TO FOLLOW INSTALLATION INSTRUCTIONS AND NOT USING THE PROVIDED HARDWARE MAY DAMAGE THE INTAKE TUBE, THROTTLE BODY AND ENGINE.

TO START:

1. Turn off the ignition and disconnect the negative battery cable.

NOTE: Disconnecting the negative battery cable erases pre-programmed electronic memories. Write down all memory settings before disconnecting the negative battery cable. Some radios will require an anti-theft code to be entered after the battery is reconnected. The anti-theft code is typically supplied with your owner's manual. In the event your vehicles anti-theft code cannot be recovered, contact an authorized dealership to obtain your vehicles anti-theft code.



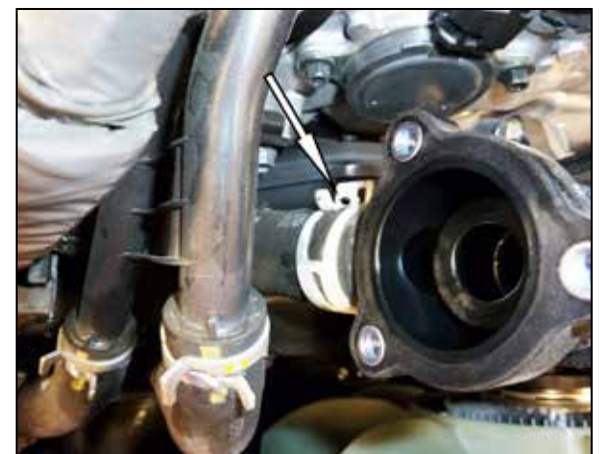
2. Pull up the engine cover along the front, then remove the engine cover from the vehicle.



3. Remove the two bolts that secure the plastic wire harness cover and then disconnect the five sensors that the harness connects too.



4. Disconnect the passenger side BOV electrical connection and then remove the three bolts securing the BOV to the factory charge tube. Remove the valve from the tube. **NOTE: the bolts will be reused in a later step.**



5. Release the spring clamp the secures the passenger side BOV hose to the charge tube and then disconnect the hose from the tube.



6. Remove the passenger side charge tube mounting bolt shown. Loosen the two hose clamps that secure the passenger side charge tube and then remove the charge tube from the vehicle.



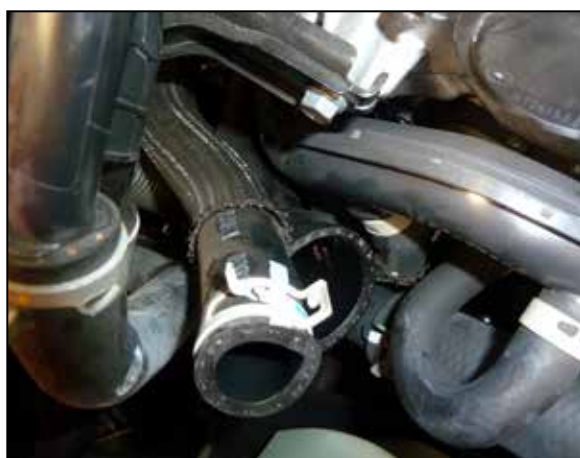
7. Disconnect the Driver side charge tube BOV electrical connection, remove the mounting bolt and loosen the hose clamps securing the driver side charge tube. Remove the driver side charge tube from the vehicle.



8. Remove the three bolts that secure the BOV to the driver side charge tube and then remove the valve. **NOTE: These bolts will be reused in a later step.**



9. Release the clamp that secures the driver side BOV hose and then remove the hose from the vehicle.



10. Release the clamp that secures the passenger side BOV hose and then remove the hose from the vehicle.



11. Install the 1/8npt pipe plugs into the accessory ports on the K&N charge tubes.



12. Install the BOV's onto the K&N charge tubes using the factory hardware.



13. Install the provided hump couplers onto the intercooler and secure with the provided hose clamps.



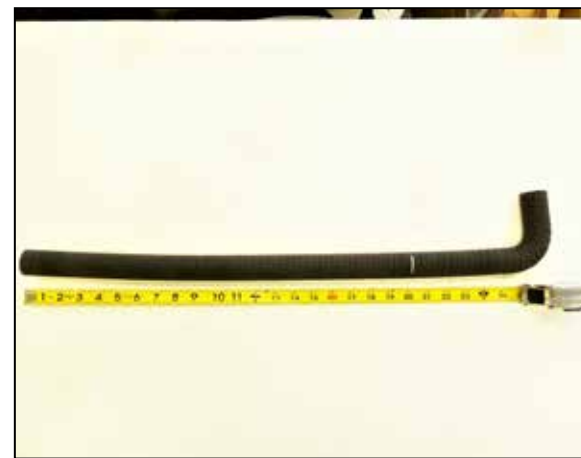
14. Install the passenger side K&N charge tube into the factory lower coupler, align with the upper hump coupler and install. Secure with the factory lower clamp and the upper hose clamp provided.



15. Install the driver side K&N charge tube into the factory lower coupler, align with the upper hump coupler and install. Secure with the factory lower clamp and the upper hose clamp provided.



16. Rotate the heater hose spring clamps as shown to provide clearance for the BOV hose.



17. Cut the provided BOV hose at 20" as shown.



18. Install the shorter 90-degree section of BOV hose onto the driver side and secure with the provided clamps.



19. Install the longer BOV hose section onto the passenger side and secure with the provided clamps. **NOTE: Double check the heater hose spring clamps will not cut the BOV hose. Reposition if necessary.**



20. Remove the engine cover mounts, install the provided rubber mounts, and then reinstall the factory cover mounts.



21. Unsnap and remove the plastic cover over the wiring harness.



22. Install the provided corrugated harness cover onto the wiring harness.



23. Install the K&N decals onto the Charge tubes.



24. Reinstall the engine cover.

25. Reconnect the vehicle's negative battery cable. Double check to make sure everything is tight and properly positioned before starting the vehicle.

26. It will be necessary for all K&N® high flow intake systems to be checked periodically for realignment, clearance and tightening of all connections. Failure to follow the above instructions or proper maintenance may void warranty.

ROAD TESTING:

1. Start the engine with the transmission in neutral or park, and the parking brake engaged. Listen for air leaks or odd noises. For air leaks secure hoses and connections. For odd noises, find cause and repair before proceeding. This kit will function identically to the factory system except for being louder and much more responsive.

2. Test drive the vehicle. Listen for odd noises or rattles and fix as necessary.

3. If road test is fine, you can now enjoy the added power and performance from your kit.

4. K&N Engineering, Inc., requires cleaning the intake system's air filter element every 100,000 miles. When used in dusty or off-road environments, our filters will require cleaning more often. We recommend that you visually inspect your filter once every 25,000 miles to determine if the screen is still visible. When the screen is no longer visible some place on the filter element, it is time to clean it. To clean and re-oil, purchase our filter Recharger® service kit, part number 99-5050 or 99-5000 and follow the easy instructions.

NOT LEGAL FOR SALE OR USE ON ANY POLLUTION CONTROLLED MOTOR VEHICLE IN CALIFORNIA OR STATES ADOPTING CALIFORNIA EMISSION PROCEDURES.

See knfilters.com for CARB status on each part for a specific vehicle