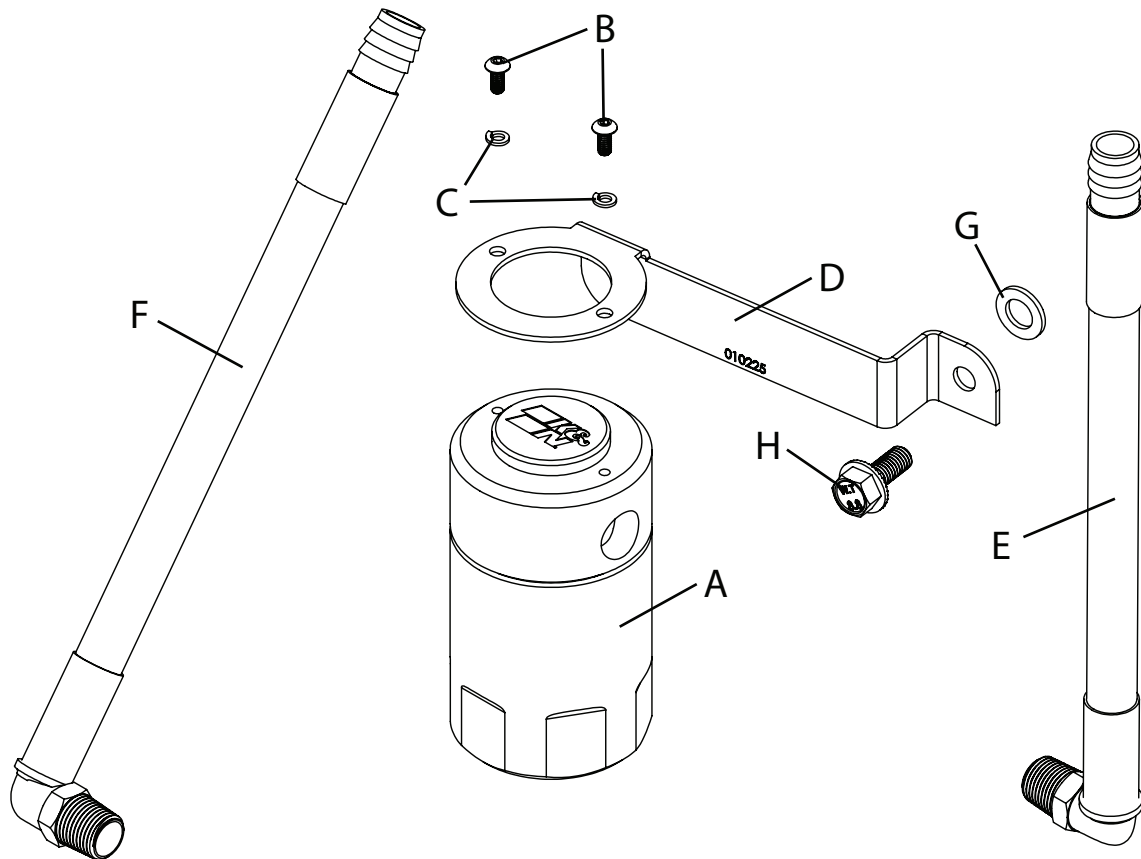




Oil Separator INSTALLATION INSTRUCTIONS

81-0806
CHRYSLER / DODGE
2005-23 300C 5.7L
2005-23 Charger 5.7L
2005-23 Challenger 5.7L
2005-10 Magnum 5.7L



PARTS LIST:

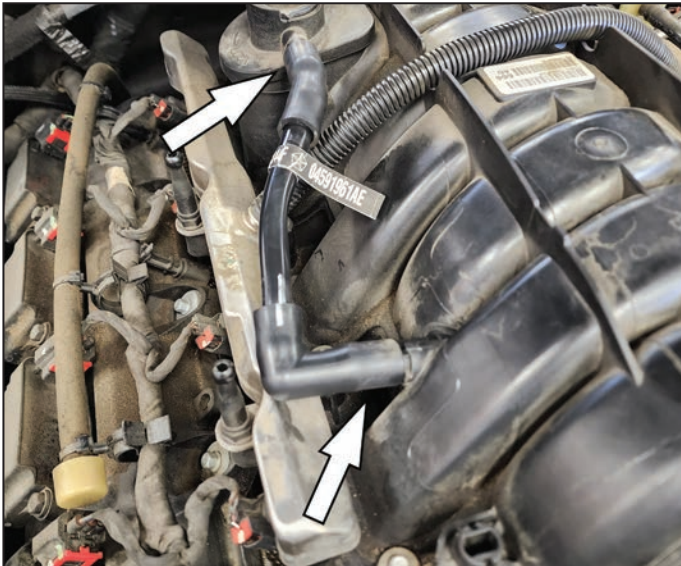
| | Description | Qty. | Part # |
|---|-------------------------------|------|------------|
| A | CATCH CAN; 2.5"OD X 4.5"H | 1 | 85-6860 |
| B | 8-32 X 3/8; BTNHD HEX | 2 | 91255A192 |
| C | 18-8 SPLIT LOCK WASHER | 2 | 92146A618 |
| D | BRACKET | 1 | 010225 |
| E | HOSE; 1/2"ID X 9"L | 1 | 084151 |
| F | HOSE; 1/2"ID X 15"L | 1 | 084150 |
| G | WASHER; 15/16" OD X 3/16"ID | 1 | 345044 |
| H | BOLT; HEX/FLANGE M8-1.25 X 20 | 1 | AEM-1-2025 |

TOOLS NEEDED:

2.5mm Allen key
10mm Socket
Ratchet
11/16" Wrench

1. Verify you have all the parts included in the kit.

2. Remove engine cover



3. Remove the factory PCV hardline from both rubber connection points. You may need to twist the rubber ends with pliers to break seal on connections. Rotate the front connection 180 degrees towards the front of the vehicle.



4. Remove the wire harness tab on the passenger side cylinder head by gently pulling out (threads must be clear for mounting bolt). Loosely mount the bracket by using the M8 bolt and washer behind the bracket. Once in place, perform final torque.



5. Assemble the hose fittings to the top of the air/oil separator. Assemble the short hose on the driver side of the canister. Assemble the long hose on the passenger side. It is required to use Teflon tape on the fittings to ensure a proper seal. **NOTE: DO NOT over-tighten fittings in top of oil separator.** Mount the canister to the bracket using the two button head screws and lock washers.



7. Install hoses attached to oil separator to engine as shown.

8. Reinstall engine cover if equipped.

9. We recommend checking the oil separator every 10,000 miles or 1 year (sooner if vehicle is driven in harsher conditions such as towing or off-road).