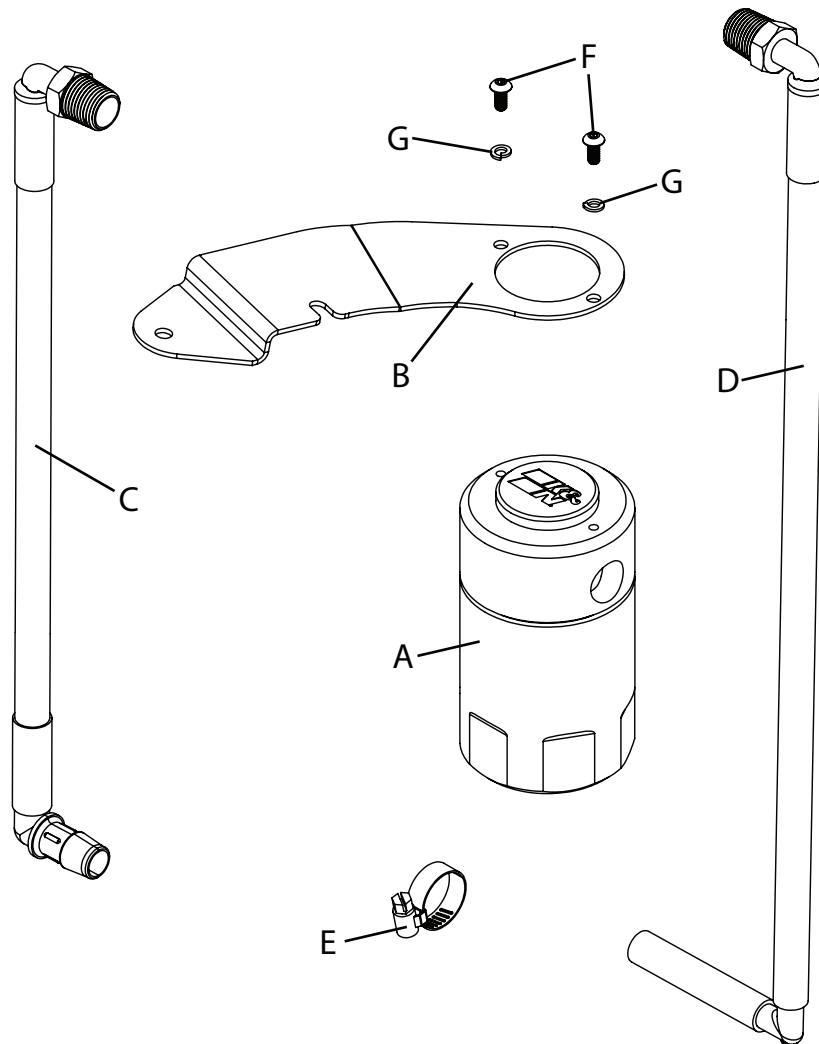




# INSTALLATION INSTRUCTIONS

**81-0815**  
**TOYOTA**  
**2022-23 Tundra 3.5L**



## **TOOLS NEEDED:**

2.5mm Allen key  
Ratchet  
10mm Socket  
13/16" Wrench  
Long Needle Nose Pliers  
Flathead Screwdriver

## **PARTS LIST:**

	Description	Qty.	Part #
A	CATCH CAN; 2.5"OD X 4.5"H	1	85-6860
B	BRACKET	1	010233
C	HOSE; 3/8"ID X 24"L	1	084167
D	HOSE; 3/8"ID X 27 1/2"L	1	084168
E	HOSE CLAMP- MINI	1	21850
F	BUTTON HEAD CAP SCREW	2	91255A192
G	18-8 SPLIT LOCK WASHER	2	92146A618

**NOTE: This is a difficult install due to the location of the PCV valve at the rear of the engine between the firewall and intake manifold. Space is highly confined and will require to essentially lay over the engine to reach it.**

1. Verify you have all the parts included in the kit.



2. Remove engine cover



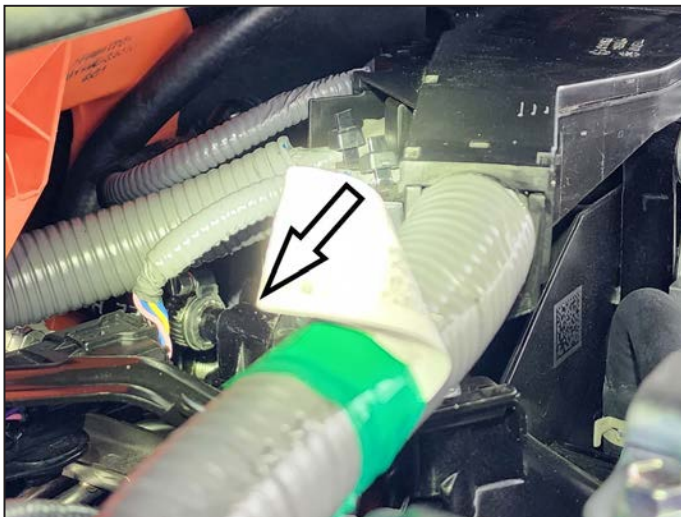
3. Remove factory PCV line that is located at the rear of the engine facing the firewall by pinching clamp and moving away from end of the tubing



4. Assemble the hoses to the top of the air/oil separator as shown below. Looking at the K&N logo on top of the canister right-side up we can identify the inlet on the left (dirty air from the PCV valve). The outlet (clean/filtered air going to the intake manifold) is on the right side. Mount the hose with the 90 degree fitting with short piece of hose at the end on the inlet side. Then the hose with 90 degree fitting on the outlet. It is required to use Teflon tape on the fittings to ensure a proper seal. **NOTE: DO NOT over-tighten fittings in top of oil separator**



5. Install mounting bracket and canister by using existing M6 bolt and supplied button head screws and lock washers on top of the wire harness on the driver's side as shown. Route the hoses along the backside of the engine in between the firewall



6. Insert the inlet hose to the PCV and secure using the supplied hose clamp. Then insert the outlet hose to the factory side of the hose that was removed and secure using original pinch clamp



7. Reinstall engine cover

8. We recommend to check the oil separator every 10,000 miles or 1 year(sooner if vehicle is driven in harsher conditions such as towing or off-road)