

**UNDER THE HOOD. *ABOVE THE REST.***

Equipped with AEM® Dryflow™ Filter

**INSTALLATION INSTRUCTIONS  
PART NUMBER  
21-815C (GUN METAL GRAY FINISH)**

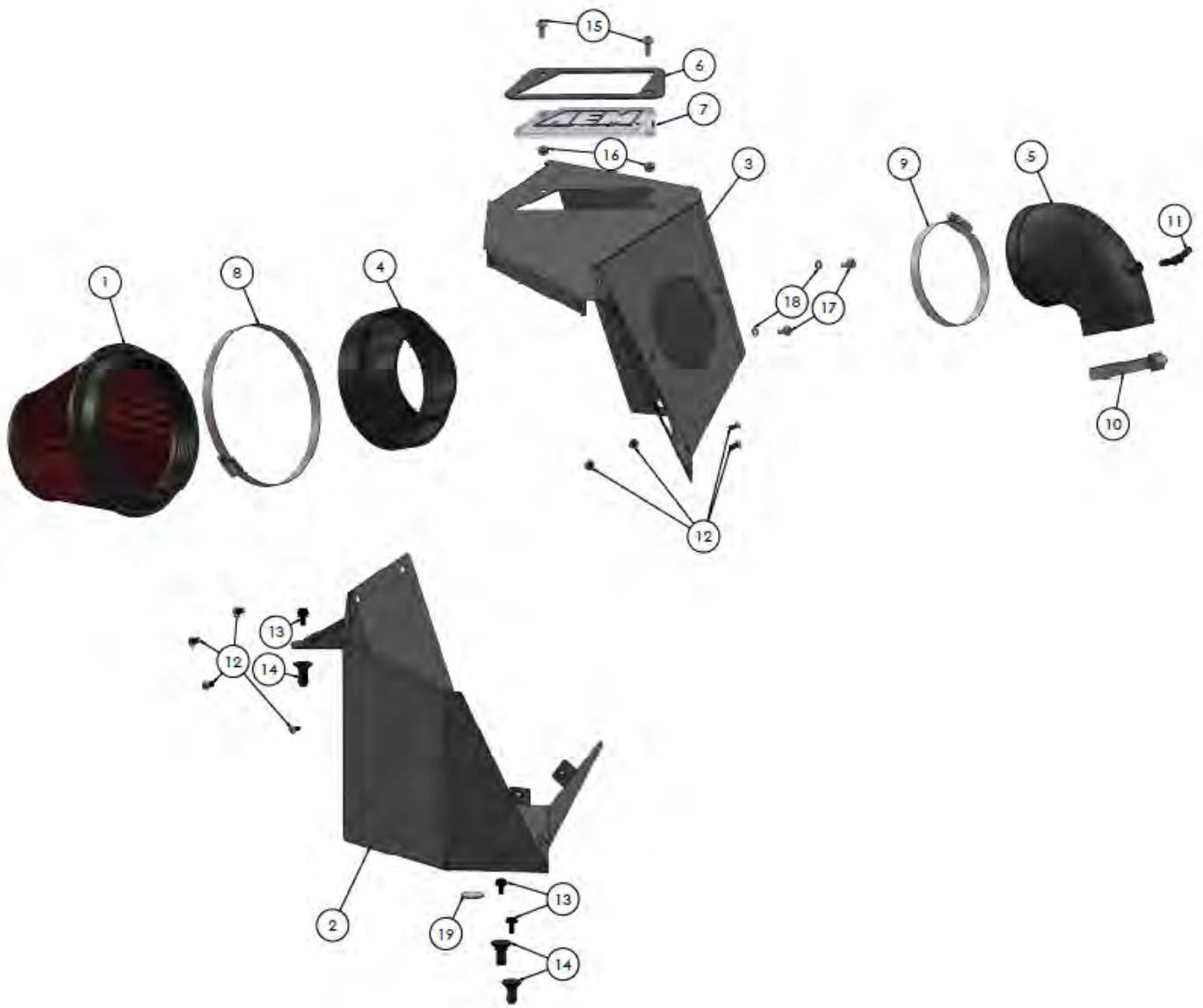
---

|           |      |            |         |
|-----------|------|------------|---------|
| 2017-2019 | AUDI | A4         | L4-2.0L |
| 2017      | AUDI | A4 Quattro | L4-2.0L |
| 2017-19   | AUDI | A5         | L4-2.0L |

**NOT LEGAL FOR SALE OR USE ON ANY POLLUTION  
CONTROLLED MOTOR VEHICLE IN CALIFORNIA OR  
STATES ADOPTING CALIFORNIA EMISSION PROCEDURES.**

See [aemintakes.com](http://aemintakes.com) for CARB status on each part for a specific vehicle

| ITEM NO. | PART NUMBER | DESCRIPTION                                   | QTY. |
|----------|-------------|---|------|
| 1        | 21-209D     | AIR FILTER; 6" X 5" X 4.75"T DRYFLOW          | 1    |
| 2        | 20-8591     | HEAT SHIELD                                   | 1    |
| 3        | 20-8592     | HEAT SHIELD; LID                              | 1    |
| 4        | 27300       | ADAPTOR; #454                                 | 1    |
| 5        | 5-1099      | COUPLER; 4"ID X 2.5"ID, 90DEG, BLACK 80 SHORE | 1    |
| 6        | 7-364       | SPACER; BADGE, CLEAR                          | 1    |
| 7        | 8-211-1     | PLATE; AEM LOGO, CLEAR, 6.2" X 2.4" X .35"    | 1    |
| 8        | 94104       | CLAMP; 1/2" BNDHOSE, 4.125-7"                 | 1    |
| 9        | 9464        | CLAMP; 1/2" BNDHOSE, 3.56"-4.50"              | 1    |
| 10       | 9444        | CLAMP; HOSE, 2.31"-3.25"                      | 1    |
| 11       | 8-216       | FITTING; ELBOW 1/4" BARBED EQUAL 90DEG, BLK.  | 1    |
| 12       | 1-112       | BOLT; M6-1.0 X 10MM, BTNHD.                   | 8    |
| 13       | 1-2110      | BOLT; M6-1 X 12, HEX/FLANGE SERRATED          | 3    |
| 14       | 8-186-1     | MOUNT, PLASTIC AIRBOX, NYLON                  | 3    |
| 15       | 07730       | BOLT; M6 X 1 X 16MM, BTNHD                    | 2    |
| 16       | 444.460.04  | NUT; M6 HEX, SERRATED                         | 2    |
| 17       | 07794       | BOLT; M6-1 X 12MM, BTNHD                      | 2    |
| 18       | 1-3025      | WASHER; M6 SPLIT LOCK ZINC                    | 2    |
| 19       | 8-167       | NEOPRENE, 1/16" X 1" ROUND ADHESIVE           | 1    |



Read and understand these instructions **BEFORE** attempting to install this product. Failure to follow installation instructions and not using the provided hardware may damage the intake tube, throttle body and engine. If you need any assistance please call 1-800-858-3333 to speak with a representative in our Customer Service Center before returning the product.

## 1. Preparing Vehicle

- Make sure vehicle is parked on level surface.
- Set the parking brake.
- If engine has run in the past two hours, let it cool down.
- Disconnect negative battery terminal.
- Do not discard stock components after removal of the factory system.
- Open the air intake kit package and make sure all parts are included.

| Tools Needed:           | Optional:           |
|-------------------------|---------------------|
| Screwdriver             | Small Torque Wrench |
| T25 Torx Driver         |                     |
| 8mm, 7mm- Socket Driver |                     |
| 10mm Wrench             |                     |
| 4mm Hex Key             |                     |

## 2. Removal of stock system



a. Use a small flat head screwdriver to pull out the retaining clip and remove the hood release lever.



b. Carefully pull the radiator shroud out.



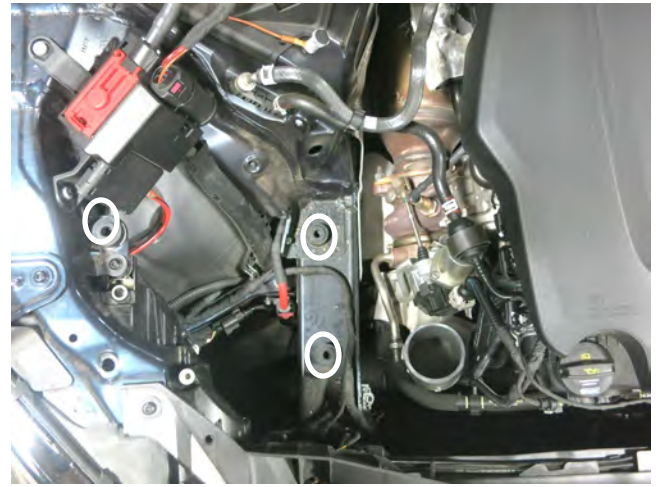
c. Remove the [2] T25 Torx screws shown above and remove the air inlet scoop.



d. Loosen the hose clamp on the intake pipe at the turbo inlet.



e. Pull the small vacuum line from the nipple on the intake pipe.



f. Pull up on the air box and remove it. Ensure the [3] grommets shown above are still in place. Do not discard any factory components or hardware.



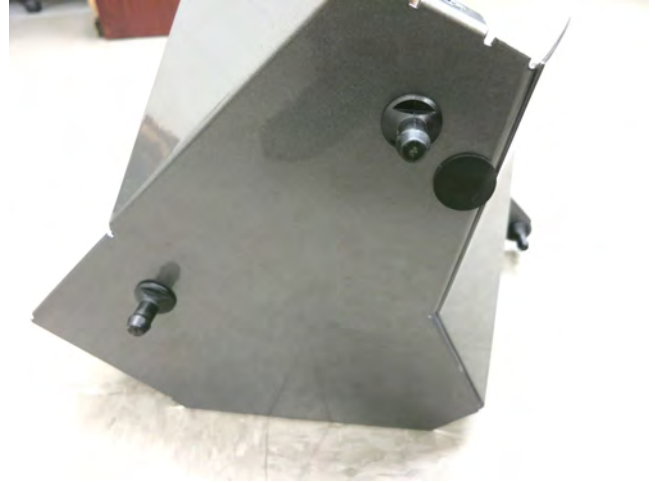
g. Carefully pull the inlet scoop gasket from the air box. You will reuse this later in step 3f.

### 3. Installation of AEM® intake system.

a. When installing the intake system, do not completely tighten the hose clamps or mounting hardware until instructed to do so.



a. Install the push-in stud on the mounting bracket as shown.



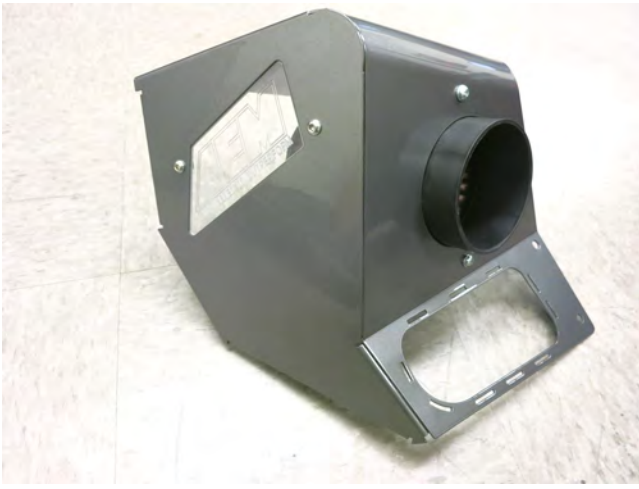
b. Install the remaining studs on the bottom of the lower half of the AEM air box. Then apply the rubber adhesive pad in the approximate location shown.



c. Install the clear AEM plate. Make sure to install the aluminum offset spacer in between the air box and plate.



d. Install the AEM filter onto the velocity stack with the supplied hose clamp.



e. Install the AEM filter with velocity stack onto the air box. Refer to the exploded view for the appropriate hardware.



f. Install the rubber gasket removed in step 2g.



g. Install the two halves of the air box together. Due to variances in the manufacturing process, slight misalignments between the holes and threaded nut-serts may be present. You can align one hole with a small screwdriver while tightening the adjacent hole.



h. Install [4] bolts show above.



i. Install [2] bolts shown above.



j. Install the remaining [2] bolts shown above.



k. Loosely install the coupler with hose clamps. Then install the vacuum fitting into the coupler.



m. Install the vacuum hose onto the fitting.



o. Finally, reinstall the radiator shroud and hood release latch.



l. Place the air box into the engine bay. Align the [3] push-in studs and make sure they seat into their respective grommets. Make sure the coupler is fully seated onto the turbo inlet then tighten both hose clamps.



n. Reinstall the inlet scoop. Slide the scoop into the rubber gasket first then align with the core support. Secure with the [2] T25 Torx bolts removed in step 2c.





STOCK INTAKE INSTALLED



AEM INTAKE INSTALLED

#### 4. Reassemble Vehicle

- a. Position all kit components for best fitment. Ensure that no components contact any unintended part of the vehicle.
- b. Check for proper hood clearance. Re-adjust components if necessary and re-tighten them.
- c. Inspect the engine bay for any loose tools and ensure that all fasteners that were moved or removed are properly tightened.
- d. Reconnect negative battery terminal and start engine. Let the vehicle idle for 3 minutes. Perform a final inspection before driving the vehicle.

#### 5. Service and Maintenance

- a. AEM Induction Systems requires cleaning the intake system's air filter element every 100,000 miles. When used in dusty or off-road environments, our filters will require cleaning more often. We recommend that you visually inspect your filter once every 25,000 miles to determine if the screen is still visible. When the screen is no longer visible some place on the filter element, it is time to clean it. To clean, purchase our Synthetic air filter cleaner, part number 1-1000 and follow the easy instructions.
- b. Use window cleaner to clean your powder coated AEM® intake tube.

**NOTE: DO NOT USE aluminum polish on powder coated AEM® intake tubes.**

For technical inquiries  
e-mail us at  
[sales@aemintakes.com](mailto:sales@aemintakes.com)  
or  
call us at  
800.992.3000

## **AEM Air Intake System Warranty Policy**

AEM® warrants that its intake systems will last for the life of your vehicle. AEM® will not honor this warranty due to mechanical damage (i.e. improper installation or fitment), damage from misuse, accidents or flying debris. AEM® will not warrant its powder coating if the finish has been cleaned with a hydrocarbon-based solvent. The powder coating should only be cleaned with a mild soap and water solution. Proof of purchase of both the vehicle and AEM® intake system is required for redemption of a warranty claim.

This warranty is limited to the repair or replacement of the AEM® part. In no event shall this warranty exceed the original purchase price of the AEM® part nor shall AEM® be responsible for special, incidental or consequential damages or cost incurred due to the failure of this product. Warranty claims to AEM® must be transportation prepaid and accompanied with dated proof of purchase. This warranty applies only to the original purchaser of product and is nontransferable. Improper use or installation, use for racing, accident, abuse, unauthorized repairs or alterations voids this warranty. AEM® disclaims any liability for consequential damages due to breach of any written or implied warranty on all products manufactured by AEM®. Warranty returns will only be accepted by AEM® when accompanied by a valid Return Merchandise Authorization (RMA) number. Credit for defective products will be issued pending inspection. Product must be received by AEM® within 30 days of the date RMA is issued.

If you have a warranty issue, please call (800) 992-3000 and our customer service department will assist you. A proof of purchase is required for all AEM® warranty claims.

**NOT LEGAL FOR SALE OR USE ON ANY POLLUTION  
CONTROLLED MOTOR VEHICLE IN CALIFORNIA OR  
STATES ADOPTING CALIFORNIA EMISSION PROCEDURES.**

**See [aemintakes.com](http://aemintakes.com) for CARB status on each part for a specific vehicle**