



INTAKE SYSTEM

INSTALLATION INSTRUCTIONS

21-839C (Gun Metal Gray Finish)

2014-20 Cooper / Cooper S

2017-20 Cooper Clubman

2019-20 Cooper Countryman

2015-19 X1

2014-19 216i Active/Gran Tourer

2014-19 218i Active/Gran Tourer

2016-17 225xe

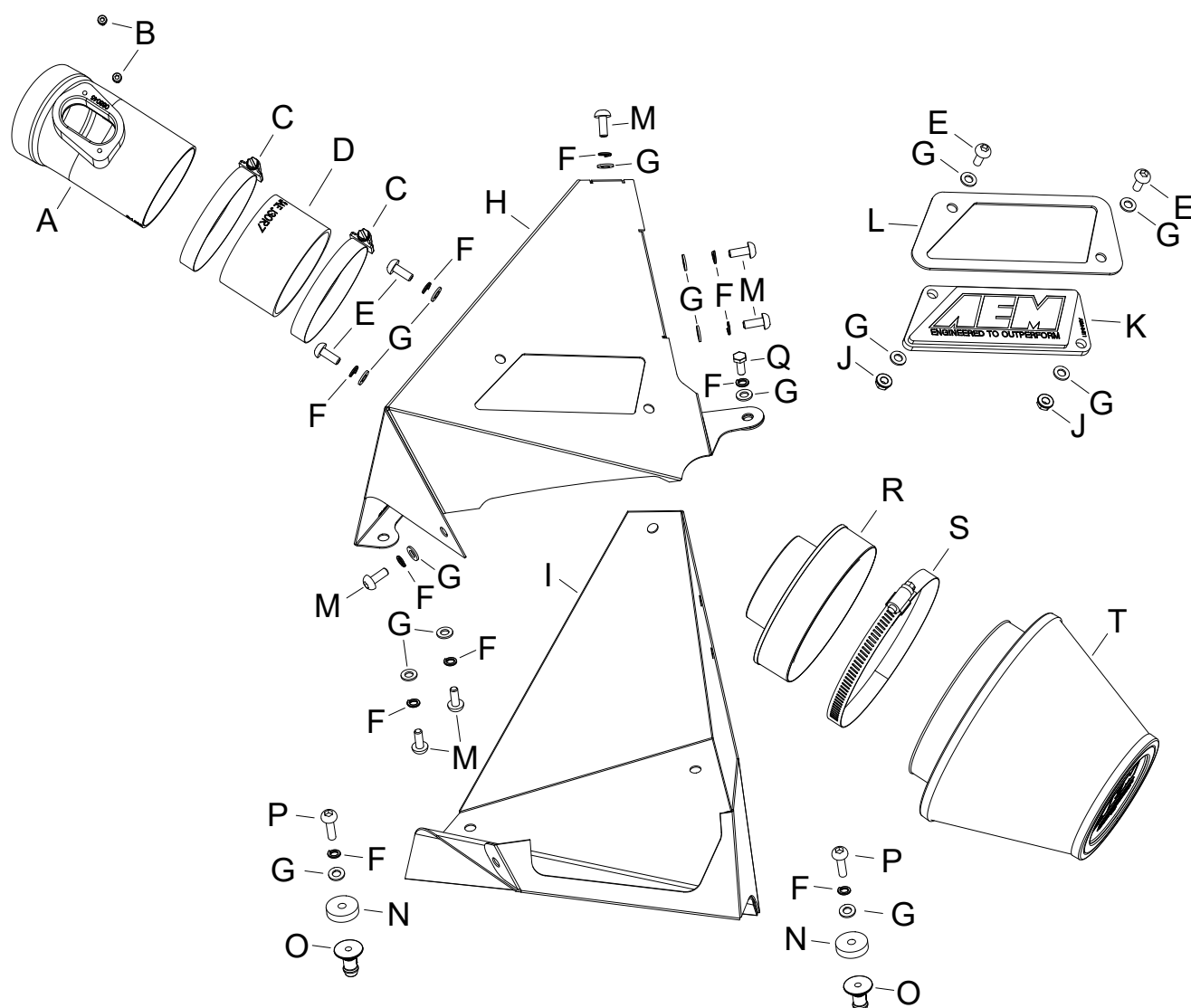
L3-1.5L

NOT LEGAL FOR SALE OR USE ON ANY POLLUTION CONTROLLED MOTOR VEHICLE IN CALIFORNIA OR STATES ADOPTING CALIFORNIA EMISSION PROCEDURES.

See aemintakes.com for CARB status on each part for a specific vehicle

TOOLS NEEDED:

Flat blade screw driver
Ratchet
Extension
10mm socket
3mm allen
4mm allen



PARTS LIST:

Description	Qty.	Part #
A INTAKE TUBE; 3"OD X 5.75"	1	2-1608C
B SCREW; M4 .7 X 12, BTNHD	2	07726
C HOSE CLAMP #48	2	08601
D HOSE; 3"ID X 2"L	1	08711
E BOLT; M6 X 1 X 16MM BTNHD	4	07730
F WASHER; M6 SPLIT LOCK ZINC	11	1-3025
G WASHER; 6MM FLAT	15	08269
H HEAT SHIELD; UPPER, MINI	1	20-8615
I HEAT SHIELD; LOWER, MINI	1	20-8616
J NUT; 6MM NYLOCK, HEXHD	2	07512
K PLATE; AEM LOGO, CLEAR	1	8-211-1
L SPACER; BADGE, CLEAR	1	7-364
M BOLT; M6-1 X 12MM BTNHD	6	07794
N SPACER; 1"OD, .25"ID, .25" THK	2	06544
O MOUNT; PLASTIC AIRBOX	2	8-186-1
P BOLT; M6-1.00 X 25MM, BTNHD	2	07729
Q BOLT; M6 X 1 X 12MM HEXHD	1	07727
R ADAPTER; FILTER, 3.0"OD	1	21569
S HOSE CLAMP; #80	1	08694
T AIR FILTER	1	21-2073DK

If you need any assistance please call 1-800-858-3333 to speak with a representative in our Customer Service Center before returning the product.

Read and understand these instructions BEFORE attempting to install this product. Failure to follow installation instructions and not using the provided hardware may damage the intake tube, throttle body and engine.

TO START:

1. Turn off the ignition and disconnect the negative battery cable.

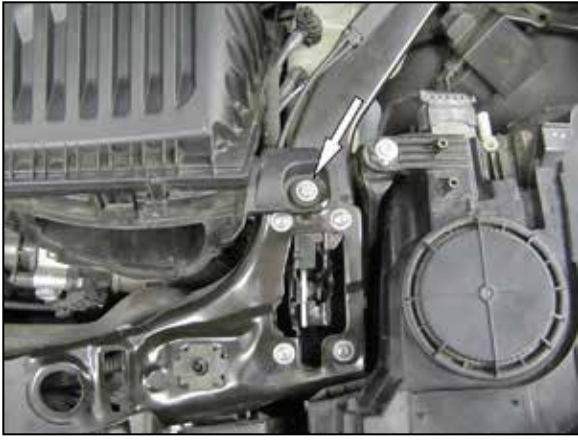
NOTE: Disconnecting the negative battery cable erases pre-programmed electronic memories. Write down all memory settings before disconnecting the negative battery cable. Some radios will require an anti-theft code to be entered after the battery is reconnected. The anti-theft code is typically supplied with your owner's manual. In the event your vehicles anti-theft code cannot be recovered, contact an authorized dealership to obtain your vehicles anti-theft code.



2. Disconnect the mass air sensor electrical connection and disconnect the wiring harness from the air filter housing.



3. Remove the two bolts that secure the fresh air intake duct too the core support. Release the locking tab at the air filter housing and then remove the fresh air intake duct.

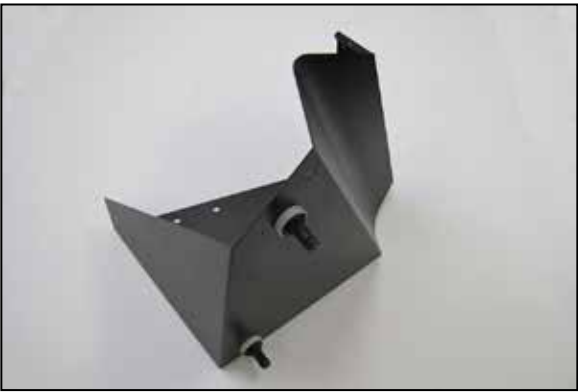


4. Remove the bolt that secures air filter housing to the core support.



5. Loosen the hose clamp that secures the intake hose to the air filter housing then remove the air filter housing from the vehicle.

NOTE: AEM recommends that customers do not discard factory air intake.



6. Install the provided mounting studs to the heat shield as shown.

NOTE: Be sure to use the two provided spacers between the mounting studs and heat shield.



7. Install the provided filter adapter into the heat shield and secure with the provided hardware. Install the provided air filter onto the filter adapter and secure with the provided hose clamp.



8. Install the AEM® badge into the upper air filter housing and then assemble the two filter housing halves and fresh air scoop and secure with the provided hardware.



9. Install the air filter assembly into the vehicle and secure with the factory fresh air scoop nuts and the bolt provided.



10. Remove the mass air sensor from the factory housing and install it into the AEM® intake tube using the hardware provided.



11. Install the provided coupler onto the intake tube but do not secure. Install the intake tube assembly into the factory intake hose and align with the filter adapter, slide the coupler onto the adapter and adjust the assembly for best fit. Secure the intake tube assembly with the provided hose clamps. Reconnect the mass air sensor electrical connection.



Reassemble Vehicle

Position the inlet pipes for the best fitment. Be sure that the pipes or any other components do not contact any part of the vehicle. Tighten the rubber mount, all bolts, and hose clamps. Check for proper hood clearance. Re-adjust pipes if necessary and re-tighten them. Inspect the engine bay for any loose tools and check that all fasteners that were moved or removed are properly tightened. Reconnect negative battery terminal and start engine. Let the vehicle idle for 3 minutes. Perform a final inspection before driving the vehicle.

Service and Maintenance

AEM Induction Systems requires cleaning the intake system's air filter element every 100,000 miles. When used in dusty or off-road environments, our filters will require cleaning more often. We recommend that you visually inspect your filter once every 25,000 miles to determine if the screen is still visible. When the screen is no longer visible some place on the filter element, it is time to clean it. To clean, purchase our Synthetic air filter cleaner, part number AEM-1-1000 and follow the easy instructions. Use window cleaner to clean your powder coated AEM® intake tube.

NOTE: DO NOT USE aluminum polish on powder coated AEM® intake tubes.

NOT LEGAL FOR SALE OR USE ON ANY POLLUTION CONTROLLED MOTOR VEHICLE IN CALIFORNIA OR STATES ADOPTING CALIFORNIA EMISSION PROCEDURES.

See aemintakes.com for CARB status on each part for a specific vehicle

AEM Air Intake System Warranty Policy

AEM® warrants that its intake systems will last for the life of your vehicle. AEM will not honor this warranty due to mechanical damage (i.e. improper installation or fitment), damage from misuse, accidents or flying debris. AEM will not warrant its powder coating if the finish has been cleaned with a hydrocarbon-based solvent. The powder coating should only be cleaned with a mild soap and water solution. Proof of purchase of both the vehicle and AEM intake system is required for redemption of a warranty claim.

This warranty is limited to the repair or replacement of the AEM part. In no event shall this warranty exceed the original purchase price of the AEM part nor shall AEM be responsible for special, incidental or consequential damages or cost incurred due to the failure of this product. Warranty claims to AEM must be transportation prepaid and accompanied with dated proof of purchase. This warranty applies only to the original purchaser of product and is nontransferable. Improper use or installation, use for racing, accident, abuse, unauthorized repairs or alterations voids this warranty. AEM disclaims any liability for consequential damages due to breach of any written or implied warranty on all products manufactured by AEM. Warranty returns will only be accepted by AEM when accompanied by a valid Return Merchandise Authorization (RMA) number. Credit for defective products will be issued pending inspection. Product must be received by AEM within 30 days of the date RMA is issued.

If you have a warranty issue, please call (800) 992-3000 and our customer service department will assist you. A proof of purchase is required for all AEM warranty claims.