



# INSTALLATION INSTRUCTIONS

Part Number DU-1007

**This filter fits:** SEE CATALOG FOR CURRENT APPLICATIONS

Congratulations, you have purchased the finest air filter that money can buy. With proper care, this filter will last 1 million miles or more. This filter can be used in a stock machine, with no modifications required. If any engine modifications have been made tuning/jetting adjustments may be required. There are special installation instructions, so please follow the procedures outlined below to ensure the K&N Filtercharger® seals properly.

## INSTALLATION

1. Remove the stock air filter.
2. Remove the left and right air manifold. (Fig. 1; left air manifold pictured)
3. Clean the air manifolds.
4. Apply four drops of the provided K&N Sealing Grease to each air manifold. (Fig. 2)
5. Apply one of the provided gaskets to each air manifold. (Fig. 3)
6. Reinstall the right air manifold and tighten the screws.
7. Install the K&N Air Filter into the air box making sure it is completely seated. (Fig. 4)
8. Reinstall the left air manifold and tighten the screws.

**THESE INSTRUCTIONS MUST BE FOLLOWED EVERY TIME THE FILTER IS SERVICED, OTHERWISE THE FILTER MAY NOT SEAL, AND DAMAGE TO THE ENGINE COULD RESULT.**

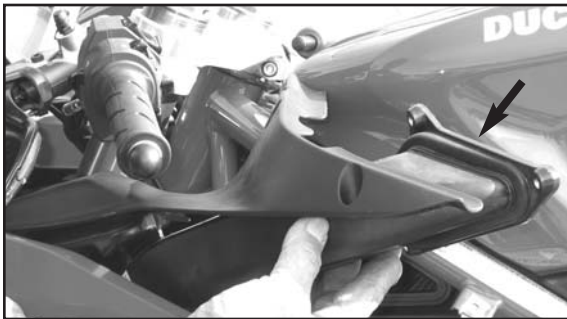


Fig. 1

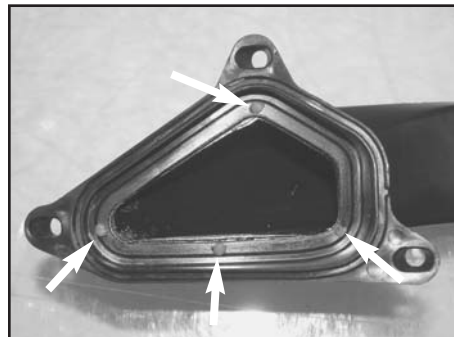


Fig. 2



Fig. 3



Fig. 4