

SPECTRE®

Performance

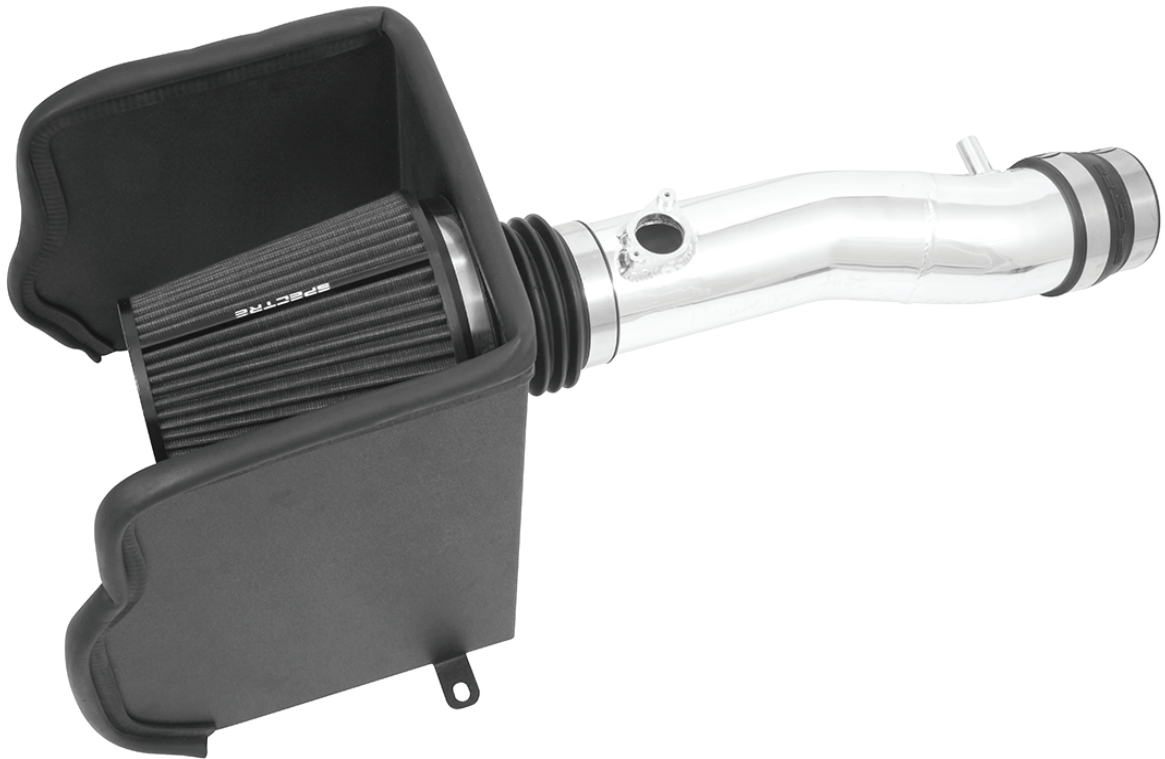
Intake Installation Instructions P/N 9060 (red filter) - P/N 9060B (blue filter) P/N 9060K (black filter)

Year/Make/Model/Engine

2016-23 Toyota Tacoma 3.5L

NOT LEGAL FOR SALE OR USE ON ANY POLLUTION CONTROLLED MOTOR VEHICLE IN CALIFORNIA OR STATES ADOPTING CALIFORNIA EMISSION PROCEDURES.

See Spectreperformance.com for CARB status on each part for a specific vehicle



Parts List

- 1- Filter
- 1- Intake tube
- 1- Heat shield
- 1- 3.5" to 3.25" Coupler
- 1- 3.5" Flex Coupler
- 1- Filter Velocity Adapter
- 1- Rubber seal
- 1- MAF Sleeve
- 2- M8 x 16 Hex bolts
- 2- M8 Washers
- 1- 6" Hose clamp
- 3- 3.5" Hose clamps
- 1- 3" Hose clamp
- 2- M4 Screws

Tools Required:

- 5/16" or 8mm Nut driver
- Ratchet
- 10mm socket
- 12mm socket
- 13mm socket
- Socket extension

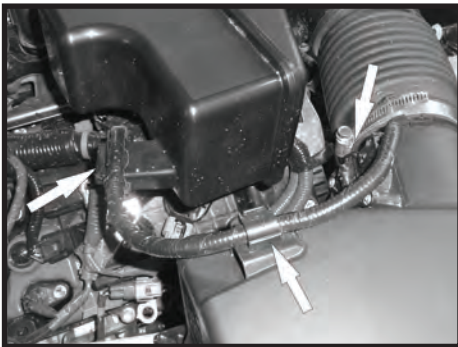
For filter reorders ask at the special order counter of your local parts store or call:
1-909-673-9800

ask for: P/N HPR9891 (red filter)
P/N HPR9891B (blue filter)
P/N HPR9891K (black filter)



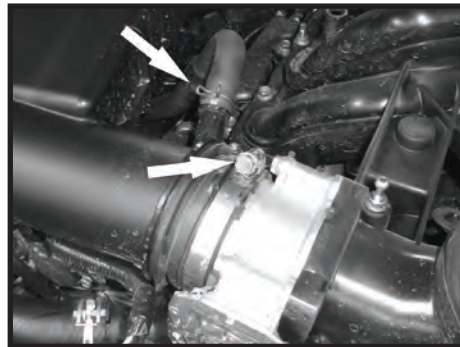
Step 1

Safety first! Before you begin the installation, make sure that the vehicle is in park (or neutral for a manual transmission) with the parking brake set. Disconnect the negative battery terminal and verify that all components that are listed are present. **Note:** This kit was designed and tested on a stock engine without any custom tuning done to the engine computer. Removing the battery cable may erase the programmed radio stations. The anti-theft code will need to be entered into some radios after the battery cable is connected. The anti-theft code can typically be found in the owner's manual or at your local dealership. Remove the engine cover by lifting up and forward on the cover.



Step 2

Disconnect the mass air meter electrical connector. Release the mass air meter harness from the two clips on the air box.



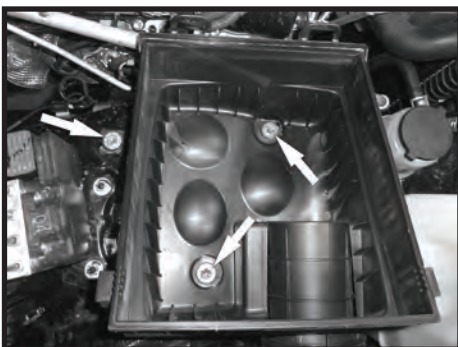
Step 3

Loosen the hose clamp that secures the intake tube to the throttle body. Disconnect the breather hose at the intake tube.



Step 4

Release the two clips securing the top of the air box and remove the air box intake tube assembly from the vehicle. Remove the stock air filter.



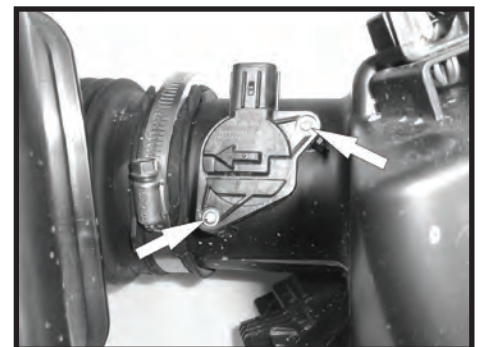
Step 5

Remove the three bolts securing the bottom of the air box to the vehicle then remove the bottom of the air box.



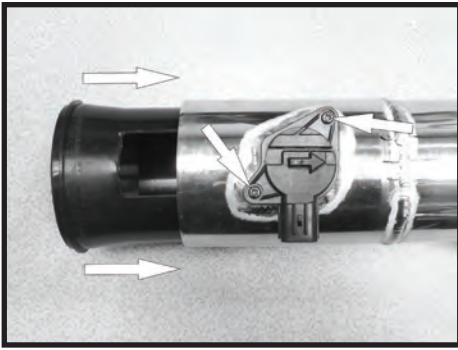
Step 6

Remove the bolt that secures the power steering reservoir to the vehicle. The screw will be reused in step 10.



Step 7

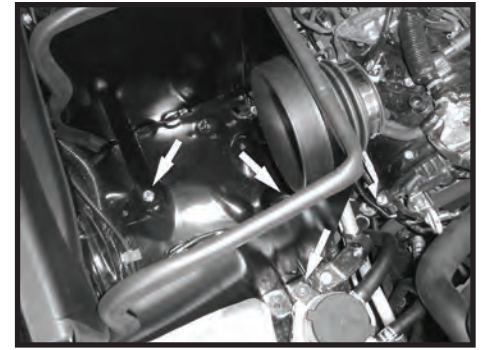
Remove the two screws securing the mass air meter sensor to the stock intake tube and then remove the sensor.



Step 8
Install the mass air meter into the Spectre intake tube using the supplied hardware. Then install the provided mass air meter plastic sleeve into the intake tube as shown.



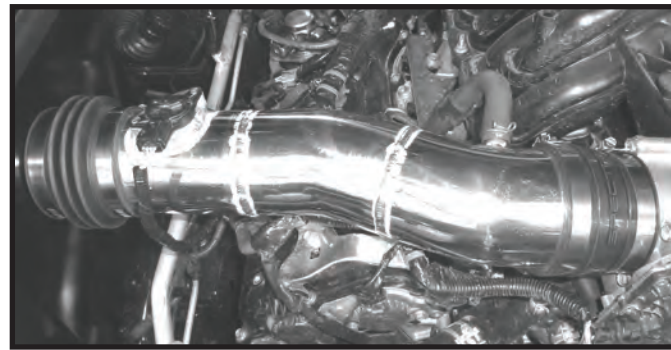
Step 9
Install the supplied bulb seal onto the heat shield as shown. Then install the velocity stack adapter and flex coupler as shown and secure with supplied hose clamp.



Step 10
Install the heat shield assembly into the vehicle. Place the front tab between the power steering reservoir and the inner fender and use the bolt removed in Step 6. Secure the heat shield in the two other locations with the provided hardware.



Step 11
Install the supplied coupler onto the throttle body and secure with the supplied hose clamp.



Step 12
Install the Spectre intake tube assembly into the coupler at the heat shield, then into the coupler at the throttle body. Then secure the intake tube with the provided hose clamps. Plug the mass air meter electrical connector into the sensor and connect the breather hose onto the intake tube.



Step 13
Install the air filter onto the velocity stack adapter and secure with the supplied hose clamp. Then re-install the engine cover.



Step 14
Make sure that all clamps and hardware are fully tightened. Reconnect the battery cable, start the vehicle and let it warm up. Shut off and inspect the installation once more for any loose clamps, wires, or hardware. Test drive & enjoy! Your installation is now complete. Periodically check all clamps and brackets.

If you need any assistance please call 1-800-858-3333 to speak with a representative in our Customer Service Center before returning the product.

 **WARNING** This product can expose you to a chemical or chemicals known to the State of California to cause cancer and birth defects or other reproductive harm.

NOT LEGAL FOR SALE OR USE ON ANY POLLUTION CONTROLLED MOTOR VEHICLE IN CALIFORNIA OR STATES ADOPTING CALIFORNIA EMISSION PROCEDURES.
See Spectreperformance.com for CARB status on each part for a specific vehicle

SPECTRE[®]
Performance

(909) 673-9800

www.spectreperformance.com

© 2017 SPECTRE PERFORMANCE Made in China

176254C
12/20/22